

**A SMOOTHER RIDE**

Before and after tests in actual installations show improvements in ride quality of as much as 50 percent. The result is exceptional passenger satisfaction and reassurance.

**CONSISTENT PERFORMANCE**

The self-adjusting design allows for greater operational tolerances resulting in a smoother, more consistent ride.

**EASY INSTALLATION**

Upgrading existing equipment requires no special set up, meaning quick installation with minimal downtime.

**Roller**

Long-life rubber compound mounted on aluminum hub. Available for applications between 1.6-9.0 m/s (350-1,800 feet per minute).

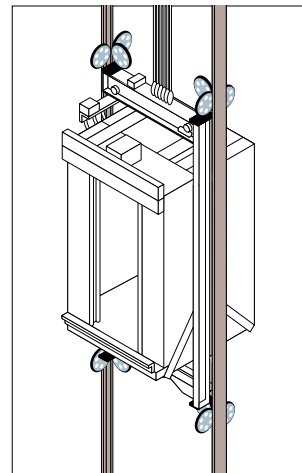
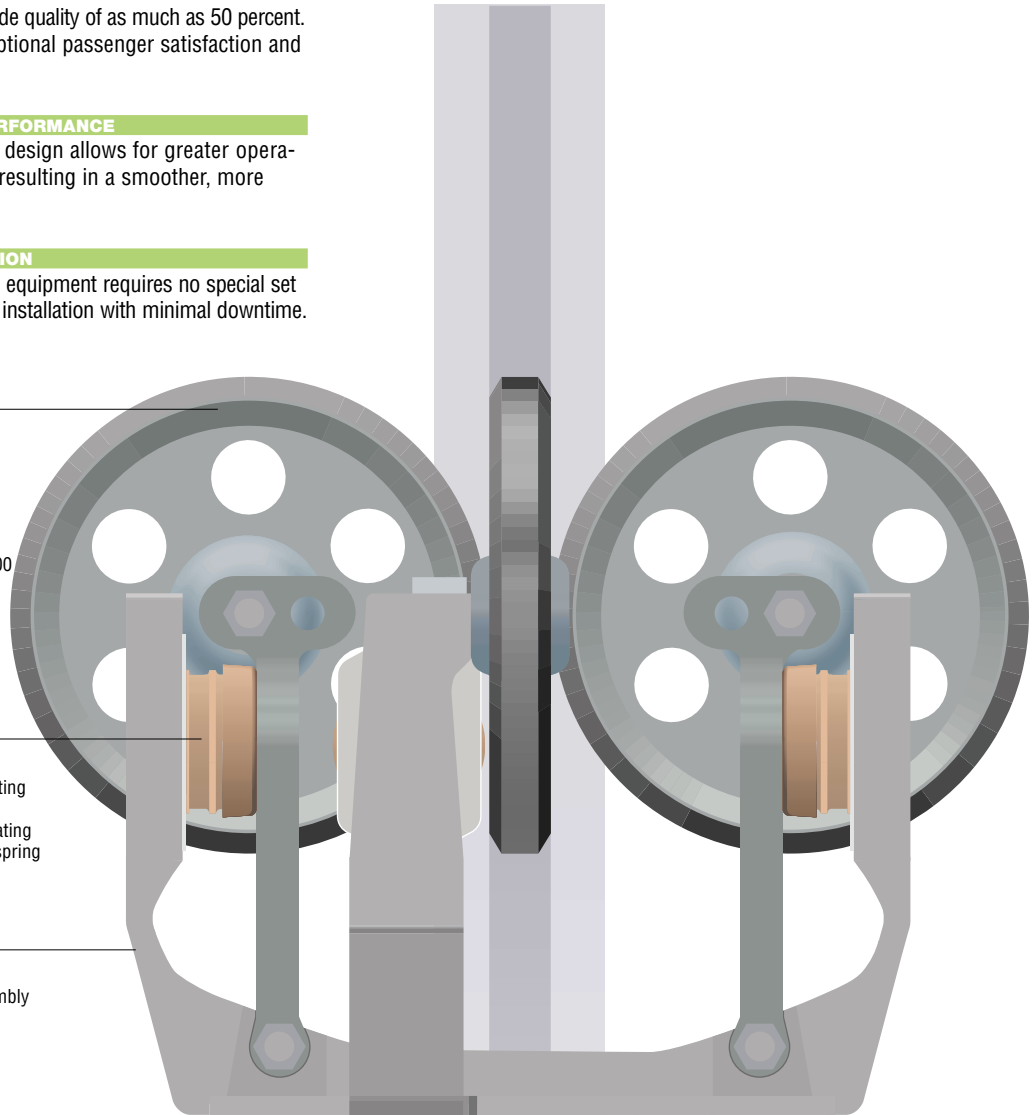
**Isolator**

Innovative, self-adjusting isolator maintains ride quality by eliminating the need for manual spring tensioning.

**Frame**

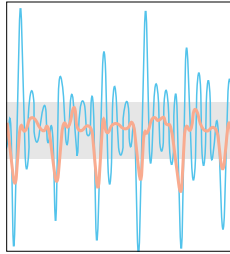
Rigid cast-steel assembly

**Guide Rail**

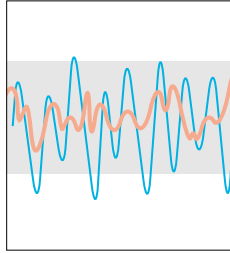


Tests demonstrated that Ultra roller guides reduce vibration by as much as 50 percent over conventional roller guides.

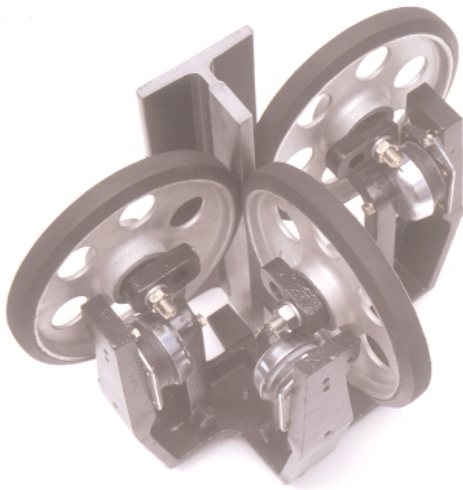
Front-to-back movement



Side-to-side movement



- Conventional roller guide
- Ultra roller guide



Above: The high-quality, precision-engineered assembly is easy to install and is virtually maintenance-free.

## Engineering a Luxury Ride

Roller guides travel along hoistway rails to keep your elevator car properly aligned as it moves up and down in the hoistway. They help smooth your elevator's ride by absorbing vibration, much the way the shock absorbers in an automobile's suspension help it glide over bumps in the road. As in an automobile, the quality of the ride depends on the quality of the suspension.

Our Ultra™ roller guides are the culmination of research and development efforts by the Otis Global Engineering group. Instead of relying on springs, the Ultra roller guides employ a unique, innovative isolator that has been proven to reduce lateral cab vibrations by as much as 50 percent. The result is a dramatic improvement in ride quality at a fraction of the cost of a rail re-alignment.

## New Life for Older Buildings

As buildings age, they tend to settle, causing shifts in hoistway rail alignment. Continual loading and unloading of the elevator car also contribute to rail misalignment. The result: a notable increase in sway and vibration in the elevator cab, giving rise to passenger anxiety and complaints.

The Ultra roller guides' self-adjusting feature tolerates rail misalignments of up to 7 mm per 5 meters (1/4 in. per 16 feet) of rail section. This means more consistent ride quality as well as a significant reduction of elevator downtime over the life of a building.

## Delivering Peace of Mind

Ride quality is a very tangible concern from a passenger's standpoint. With the installation of Ultra roller guides, lateral vibration tests demonstrate an improvement of up to 50 percent. This translates into greater passenger comfort and peace of mind. The more enjoyable ride contributes to an enhanced perception of overall building quality.

## Cost-Effective Operation

Rail re-alignment costs are considerable and result in extensive elevator downtime. Because of the Ultra roller guides' greater ability to adjust to varying rail conditions, the rails require less frequent re-alignment caused by car-loading and building shifts.

Conventional spring-based roller guides require manual tensioning and adjustment to maintain ride quality. The Ultra roller guides' innovative isolator is self-adjusting, providing consistent ride quality with minimal maintenance.

Car balance also affects the performance of conventional roller guides. Ultra roller guides reduce the effect of car imbalance, providing reliable and consistent ride quality.

As a result of these innovations, the Ultra roller guides deliver dependable performance with far less maintenance than conventional roller guides.

## A Wide Range of Applications

The Ultra roller guides are available in 200 mm. (8 in) and 260 mm. (10 in) roller sizes. The Ultra roller guides serve as a direct replacement for original Otis equipment and are easily adaptable to other existing equipment. The Ultra roller guides are designed for loads of up to 2,500 kg. (5,500 lbs) and speeds of 1.6-9.0 m/s (350-1,800 feet per minute). Ultra roller guides have been shown to dramatically improve the lateral ride quality of elevator systems.

## Setting the Standard

Otis has built a reputation based on safety, quality, reliability and innovation for more than 150 years. With its Ultra roller-guide solution, Otis offers owners and property managers a cost-effective way to enhance the quality of their buildings by providing the smoothest, quietest ride possible. In fact, there is nothing else like it on the market today.