

Made to move you™



The Tianjin CTF Finance Centre, a soaring mixed-use tower in Tianjin, China, features 103 Otis elevators and escalators.

GIVING PEOPLE FREEDOM TO CONNECT AND THRIVE IN A TALLER, FASTER, SMARTER WORLD

The global leader in the manufacture, installation and servicing of elevators and escalators, we move 2 billion people a day and maintain approximately 2.1 million customer units worldwide – the industry's largest service portfolio. You'll find us in the world's most iconic structures, as well as residential and commercial buildings, transportation hubs, and everywhere people are on the move.

\$12.8B

2020 net sales

69K

employees

~2.1M

customer units maintained

40K

field professionals

>200

countries and territories served

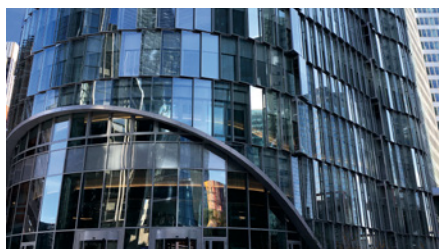
~1400

branches and offices



COLLINS HOUSE

Just 11.5 meters wide at its base, Melbourne's Collins House belongs to a new generation of super-slim skyscrapers that are transforming urban skylines everywhere. The 61-story luxury residential building features two Otis SkyRise® elevators and a Gen2® unit.



ALTO TOWER

The tower flares outward as it rises 150 meters above Paris' La Défense business district. We engineered a system of eight double-deck SkyRise elevators, configured to take passengers directly to their destination without the need for a transfer floor.



PANAMA METRO

Panama's transit authority tapped us to supply nearly 300 escalators and more than 120 elevators to ferry passengers from street level to the train platforms at 30 stations along Lines 1 & 2 of the country's new metro system, Central America's first.

OTIS

Learn more at [otis.com](https://www.otis.com)

© 2021 OTIS ELEVATOR COMPANY.


INVENTING THE FUTURE, TODAY

We are ushering in an exciting new generation of smart, connected products and services for the safety, comfort and convenience of passengers and customers alike.

Our Compass® 360 intelligent dispatching system directs passengers to the elevator that will get them to their destination the fastest, with the fewest stops. Our eCall™ Plus smartphone app allows passengers to summon their elevator remotely for a touchless experience.

In 2020, we successfully piloted voice and gesturing technologies for summoning elevators at Foxwoods Resort Casino in Connecticut, USA — and are now rolling out these touchless solutions to customers in China and North America for use in apartment buildings, hospitals and other settings, with other geographies to follow.



 Foxwoods Resort Casino successfully piloted elevator voice and gesturing technologies from Otis.

Powered by the Internet of Things, our Otis ONE™ digital platform provides real-time status information, proactive communication and predictive insights, along with the reassurance of remote intervention when needed.



**Signature
Service™**

Our service mechanics now carry iPhones loaded with an expanding suite of Otis-built proprietary apps, giving them instant access to everything they need to reduce paperwork, improve customer responsiveness and quickly get units back into service.

GEN2® FAMILY OF ELEVATORS

Our bestselling elevator, the Gen2 is prized for its energy efficiency, reliability, and smooth, quiet ride – benefits made possible by its flat-belt technology and compact design. Configurations are available for residential, commercial, hospitality, medical and infrastructure settings.

SKYRISE® ELEVATOR

Our most advanced high-rise system yet, the SkyRise elevator integrates industry-leading technologies with space-saving design. The controller employs adaptive motion profiling to reduce energy consumption while a patented control algorithm ensures a smooth ride.

SKYBUILD™ CONSTRUCTION ELEVATOR

The SkyBuild internal construction elevator transports work crews quickly, comfortably and safely during construction. It rises with the building and once construction is complete, SkyBuild converts into a SkyRise elevator for permanent use.

ESCALATORS COMMERCIAL/PUBLIC

Reliable, safe and stylish, our Link™ commercial escalators are designed for easy maintenance and maximum uptime. Our public escalators are engineered to handle the high traffic demands of busy metros and airports, year after year.

OUR COMMITMENT TO GLOBAL CITIZENSHIP

At Otis, we believe that financial performance and corporate responsibility go hand in hand. Two initiatives we launched in 2020 exemplify how we are putting this core belief into action.


Our Commitment to Change

This six-point framework publicly commits us to specific actions to ensure Otis is a place where every voice feels safe, welcome and heard.

Made to Move Communities™

Through our new Corporate Social Responsibility program, we aim to inspire student innovators from around the world to apply creative, technology-based solutions to eliminate mobility challenges in underrepresented communities.



 Otis volunteers in St. Petersburg, Russia, gave students participating in the Made to Move Communities program a factory tour to help inspire new approaches to mobility solutions.

OTIS

Learn more at [otis.com](https://www.otis.com)

© 2021 OTIS ELEVATOR COMPANY.

iPhone® is a registered trademark of Apple Inc.