

A dream home

OTIS



Comfort



Advanced technology and warm, sober lines for a functional day-to-day.

The best sensation is not to notice anything.

A dream lifestyle

Smooth
Silent
Precise

Accessibility



Enjoy the surroundings with no worries about steep climbs, uneven ground or stairs; create a special space.

Freedom
Comfort
Well-being

Versatile

The Gen2 Home is the ideal platform lift for any type of single family home or building with moderate traffic, in new construction projects and the renovation of existing buildings.

A platform lift in symbiosis with the environment but adapted to the needs of the building and minimal space requirements.

Single family
homes
Schools
Residential
homes
Small hotels
& businesses

A value proposition

SUSTAINABILITY

The first platform lift for buildings with low traffic that incorporates the Gen2 traction system patented by Otis and replaces traditional steel ropes with **flexible steel belts** coated in polyurethane.

The compact machine, with a weight of 53 kg, is housed in the hoistway which means **a machine room is no longer necessary**, thus offering considerable construction savings.

Its exclusive technology provides energy savings of up to 70% compared with hydraulic lifts.

GLOBAL SERVICE

Otis offers you a **complete Service**, providing advice right from the start of the project: preliminary study, installation, financing, legal information, auxiliary works, final completion of the work, startup of the platform lift and maintenance of the equipment.

The specific maintenance program created by Otis for this platform lift guarantees top performance. Where necessary, and in unforeseeable situations, Otis has a **24-hour telephone service** for breakdowns. We also offer an optional, exclusive **Elite Service** which allows possible malfunctions to be detected before they occur and resolved using online monitoring.

SAFETY

The flat belts are 20% lighter and **last up to 3 times longer than conventional wire ropes**.

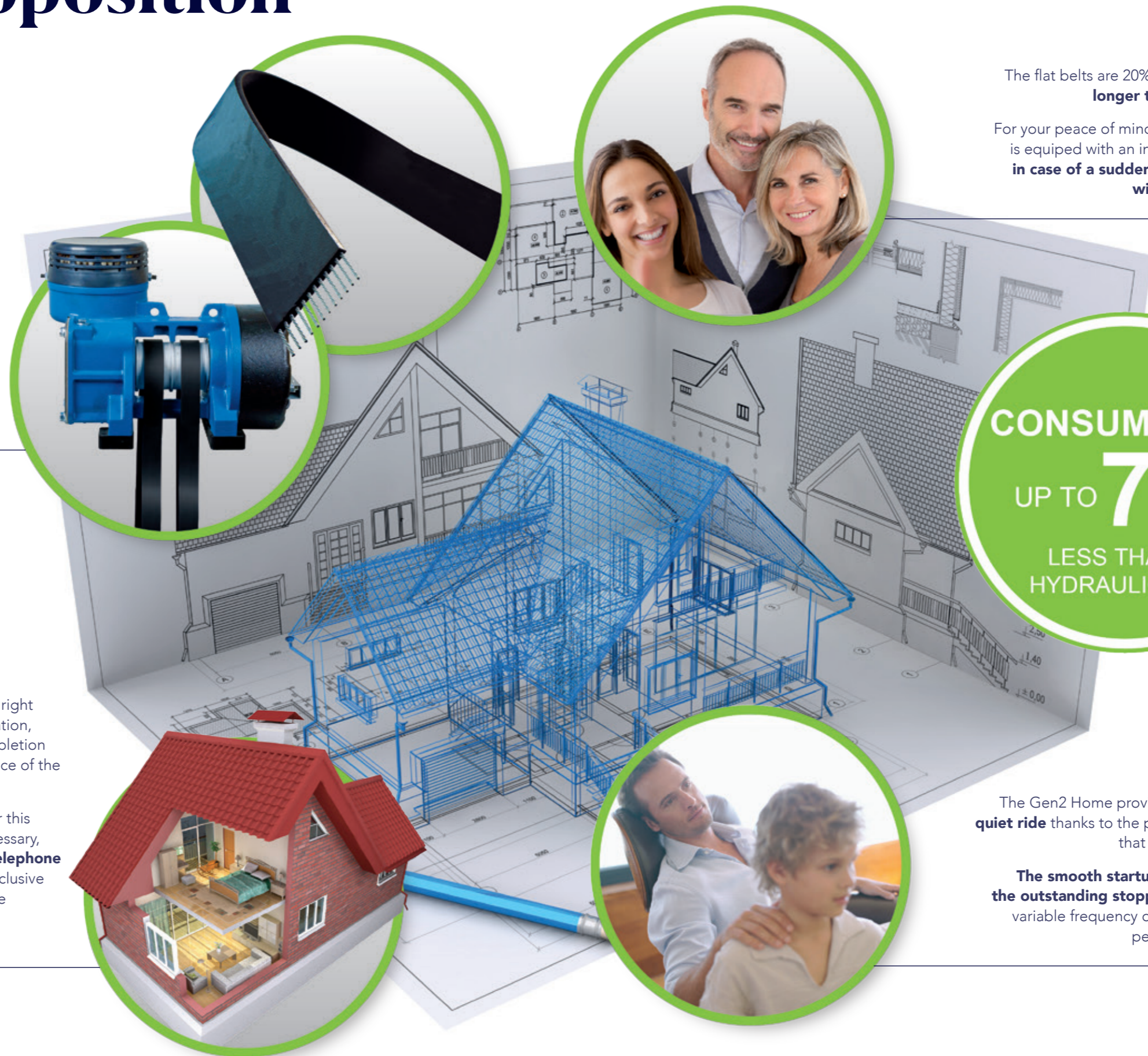
For your peace of mind, as an option, the Gen2 home is equipped with an independent power system that, **in case of a sudden cut, can make up to 10 trips without connection to the grid.**

CONSUMPTION
UP TO **70%**
LESS THAN A
HYDRAULIC LIFT

COMFORT

The Gen2 Home provides an **exceptionally smooth, quiet ride** thanks to the polyurethane-coated steel belts that eliminate metal to metal noise.

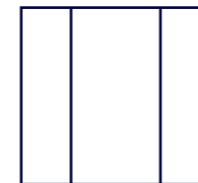
The smooth startup and deceleration as well as the outstanding stopping accuracy, provided by the variable frequency drive, make the Gen2 Home the perfect platform lift for the home.



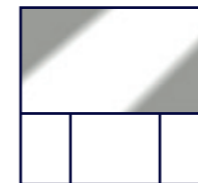
Harmony Naturalness Distinction

Full height central mirror available from January 2018

MIRRORS



No mirror

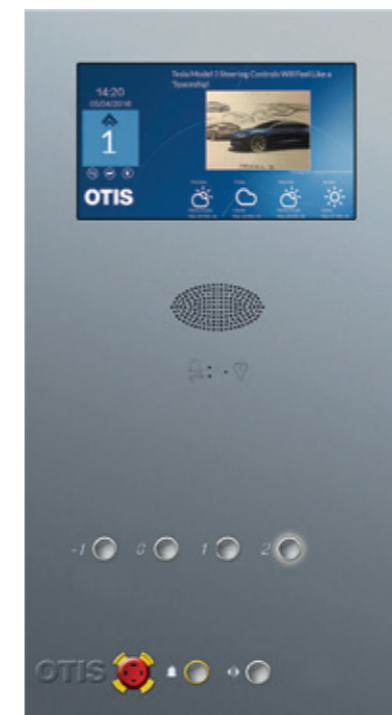


Half mirror from wall to wall at the rear



Full length central mirror
**Available from January 2018*

CAR OPERATING PANEL



Stainless Steel Button pressed, illuminated in white Key switch option

EVIEW (OPTIONAL)



Not available actually. Consult our technical department.

HALL CALL BUTTON



With arrival indicator
(for manual folding doors without windows)

POSITION INDICATOR ON LANDING



POSITION INDICATOR INSIDE CAR



HANDRAILS



Rounded Bar finish, mirror chrome Support finish, brushed chrome



Rounded Bar finish, brushed chrome Support finish, mirror chrome

KICKPLATE

- Aluminium or PVC

MANUAL FOLDING DOORS ON LANDING

Consult availability



No window



Window*



Panoramic*



Maxi-Panoramic*

* With clear, smoked or reflective glass.

AUTOMATIC BUS TYPE CAR DOORS

Consult availability



No window



Window*



Panoramic*



Maxi-Panoramic*

* With clear or smoked glass.

AUTOMATIC DOORS



2 Panels



3 Panels

Consult our technical department about available door colours as well as possible measurements of the frames.

CEILINGS



Stainless Steel



White

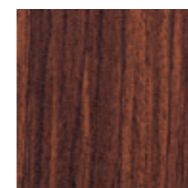
Materials for every ambience

Charm
Simplicity
Exclusivity

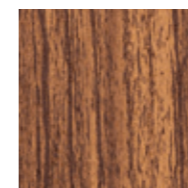
SKINPLATE PANELS



Cordoba pine



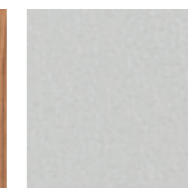
Royal mahogany



Spice brown



Walnut brown



Structured silver



Sunbleached



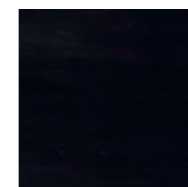
Golden silver



Marble



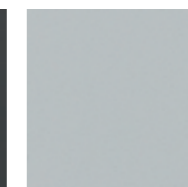
Brushed metal



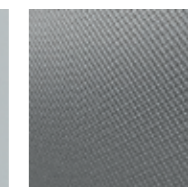
Deep black



Dark grey



Natural silver



Linen silk

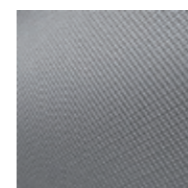


Coffee

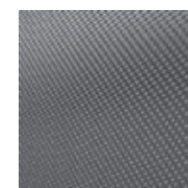
STAINLESS STEEL PANELS



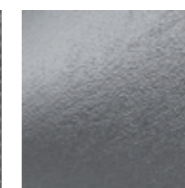
Brushed stainless steel



Linen



Dama



Buffalo Skin

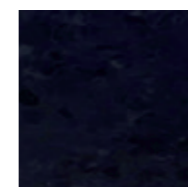
RUBBER FLOORINGS



Grey concrete



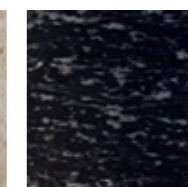
Natural concrete



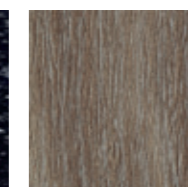
Black stone



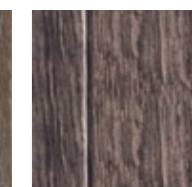
Natural cement



Black marble



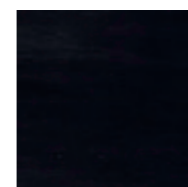
Rustic oak



American cherry

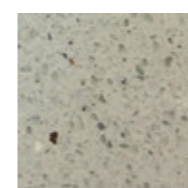


Sandstone

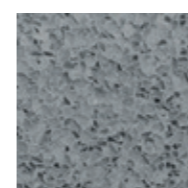


Deep Black

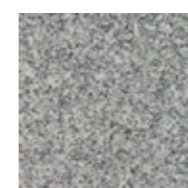
STONE FLOORINGS



Baltic white



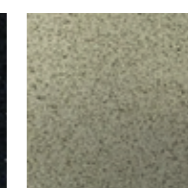
Silver pearl



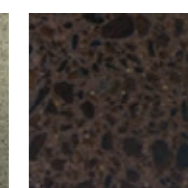
Infinite grey



Black galaxy



Sahara



Cafe

Technical specifications

SPEED

- 0,15 m/s.

LOAD CAPACITY

- From 250 to 385 kg.

	CW (width) x CD (depth)
1 Person +1 Wheelchair or 3 persons	1100x1400 ≥ Dimensions ≥ 900x1400
1 Wheelchair or 2/3 persons	900x1400 > Dimensions ≥ 800x1250
2/3 persons	Dimensions < 800x1250

ENTRANCES

- With one entrance or two entrances at 90° and 180°.
- Maximum rise of 6 stops, 15 metres.

TRACTION

- Compact traction machine using flat belts.

MINIMUM PIT

- Pit of 100 mm for vinyl floorings.
- Pit of 120 mm for granite floorings.

CLEARANCE

- Minimum overhead clearance 2500 mm (2720 mm with optional independent power system). In case of automatic telescopic door with 3 panels 2650 mm (2870 mm with optional independent power system).

CONTROLLER

- Completely silent.
- Located in the door column on the top floor.
- Measurements:
330 mm wide x 95 mm deep x 2100 mm high.

HOISTWAY OPTIONS

- Traditional hoistways with masonry or concrete and also steel and glass structures.
- Possibility for installing inside or outside the building.

TYPES OF DOORS

- Car door entrance in stainless steel.
- Manual folding landing doors, no window, with window, panoramic or maxi panoramic, all of them with the possibility of bus type car doors or without car doors. (Consult availability)
- Automatic, telescopic landing doors and car doors with 2 or 3 panels.

DOOR OPENING MEASUREMENTS

- Manual folding doors on landing ... From 600 to 900 (OP)
- Bus type car doors From 600 to 900 (OP)
- Doors with 2 panels From 700 to 900 (OP)
- Doors with 3 panels From 600 to 900 (OP)

REGULATIONS AND STANDARDS

- Machinery Directive 2006/42/EC
- RD 1644/2008
- Standard ISO 25745 Class A

BASIC CONFIGURATION

- In the event of an electrical power cut, the EAR device (Automatic Rescue System) moves the car to a landing thus avoiding the possibility of trapped passengers.
- Stop button in the car operating panel.
- External communication system.
- Access protection. In the absence of car doors, an invisible screen of infrared beams acts as a safety net.
- **Automatic car lighting shut down.** When the platform lift is not in use, after a certain period of time the car lighting switches off and remains off until it is put into operation again.

OPTIONAL CONFIGURATION

- With automatic car doors (not for BUS type doors), curtain of infrared beams.
- Light in corridor automatically switches on.
- Position indicator on landing.
- Panoramic car.
- In case of a sudden power cut, the Gen2 Home has an independent power system that can make up to 10 trips without connection to the grid.
- Decorative exterior car finish for glass hoistways

**Consult about available colours*

CAR DIMENSIONS (MM)

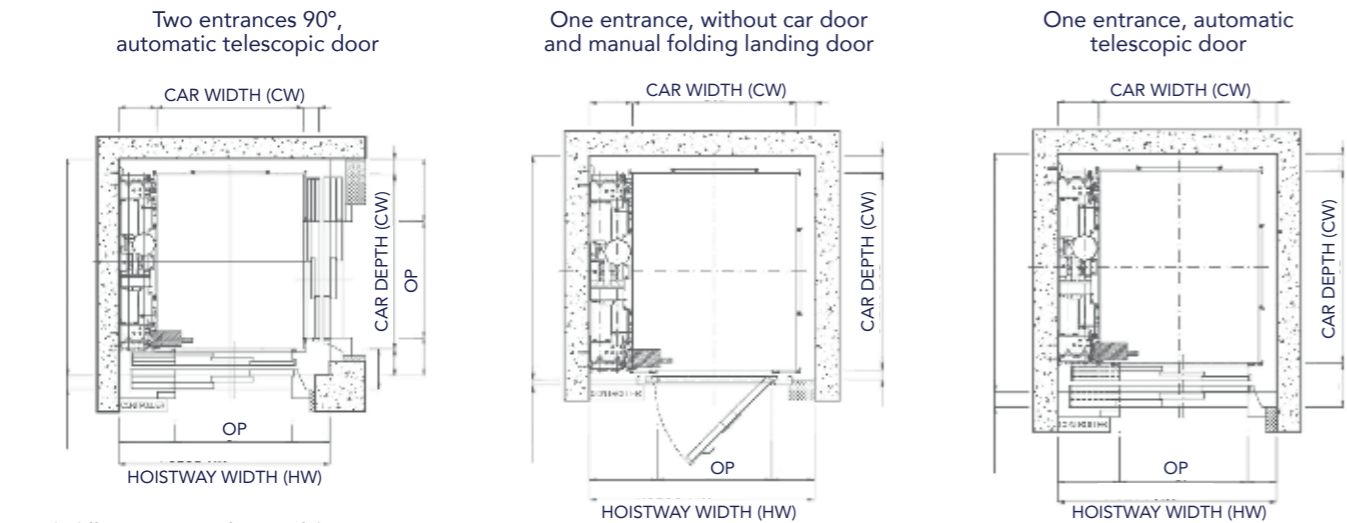
CW (width)	MIN	630
	MAX	1.200
CD (depth)	MIN	780
	MAX	1.400
CAR HEIGHT	2.100	
DOOR HEIGHT	2.000	

- Maximum car dimensions, 1.100 x 1.400
(Consult possibility of other dimensions)

OPERATES WITH SINGLE
PHASE 230V CURRENT



LOW PIT 100mm



Consult different options of types of doors.

— Otis Elevator Company is the world's leading manufacturer and maintainer of elevators, escalators and moving walkways.

Founded more than 160 years ago by the inventor of the safety elevator, Otis offers products and services through its companies in more than 200 countries and territories, and maintains approximately 2 million elevators and escalators worldwide. Every day, Otis moves more than 2 billion people through the world's urban landscapes.

Otis is a unit of United Technologies Corporation (UTC), a leader in the global building systems and aerospace industries.

For more information, visit www.otis.com.
Follow us on Twitter @otiselevators.