



OFFICES

Head Office & Western Region (Mumbai Operations) :

Otis Elevator Company (India) Limited
Magnus Towers, 9th Floor, Mindspace, Link Road, Malad (West), Mumbai - 400 064
Tel.: (91-22) 2844 9700 / 6679 5151
Email: response@otis.com

Eastern Region :

Bengal Intelligent Park
Building – Delta, 4th Floor
Block EP&GP, Sector V
Salt Lake Electronics Complex
Kolkata - 700 091
Tel.: 033 - 40524343 / 40524300 / 40524301

Northern Region :

271 & 271, Aggarwal Cyber Plaza – II,
C-7, Netaji Subhash Place,
Pitampura, Delhi - 110034
Tel.: 011 - 46069000 / 46069211 / 46069100

Southern Region :

Otis House, M. K. Towers,
#27 Langford Road, Shanti Nagar,
Bengaluru - 560 025
Tel.: 080 - 2211 1190 / 4031 4500

Western Region - Area Operations :

1st Floor, Amar Synergy Building,
Next to Vijay Sales & Sadhu Vaswani Chowk,
Near Pune Railway Station,
Pune - 411001
Tel.: 020 - 6704 5100

SERVICE CENTRES :

Western Region :

Mumbai, Navi Mumbai, Thane, Nashik.

Eastern Region :

Agartala, Angul, Bhubaneswar, Bokaro,
Dhanbad, Durgapur, Guwahati, Jamshedpur,
Jhadsuguda, Kahalagaon, Kolkata, Patna, Ranchi,
Shillong, Siliguri.

Northern Region :

Agra, Aligarh, Allahabad, Amritsar, Bareilly,
Chandigarh, Dehradun, Ghaziabad, Gurgaon,
Gwalior, Haridwar, Jalandhar, Jaipur, Jodhpur,
Jammu, Kanpur, Kota, Ludhiana, Lucknow,
Meerut, Moradabad, New Delhi, Noida, Rohtak,
Shimla, Shaktinagar, Sonebhadra, Srinagar,
Udaipur, Varanasi.

Southern Region :

Bengaluru, Calicut, Chennai, Coimbatore,
Ernakulam, Erode, Hubli, Hyderabad, Kaiga,
Kottayam, Madurai, Mangalore, Mysore,
Ootakamund, Pondicherry, Quilon, Ramagundam,
Salem, Thiruvananthapuram, Thirunelveli, Trichy,
Trichur, Vellore, Vijaywada, Vishakapatnam.

Western Region - Area Operations :

Ahmedabad, Ankleshwar, Aurangabad, Bhopal,
Goa, Indore, Jabalpur, Kolhapur, Korba, Nagpur,
Pune, Rajkot, Raipur, Solapur, Surat, Vadodara,
Valsad.

MANUFACTURING :

Bengaluru
No.92, KIADB Indl. Estate,
Phase II, Jigani Indl. Area,
Anekal Taluk, Bengaluru - 560 105
Tel.: 080 - 782 5401 / 5402 / 5403
Email: response@otis.com

NATIONAL SERVICE CENTRE

SAI DHARA, Block - D2, Warehouse 3 & 4,
Mumbai-Nashik Highway - NH3,
Borivali (Kuksha) Village, Bhiwandi,
Thane Dist. - 421 302



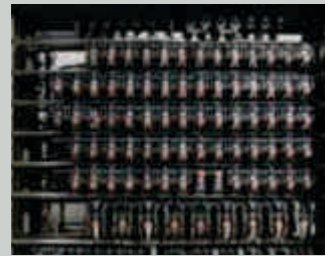
Otis 300M

Rejuvenate your elevator

Often the decision to modernize an elevator comes as a direct result of inconsistent performance. Typically the symptoms manifest themselves through poor call response time, floor levelling, jerky rides and door opening and closing issues. However, all these challenges need not mean replacing your elevator with a new one; the answer may just lie in modernizing your elevator.

Otis brings to you an elevator modernization program that specifically targets 1.5 meter per second elevators with a streamlined, time-saving process with minimal disruption. Our modernization package marries new technology with existing bringing it up to today's standards of reliability, efficiency, safety, performance and sustainability.

Your almost new elevator will offer a smoother ride, reduce energy cost & consumption with up to date safety enhancement.



PERFORMANCE UPGRADE

- **New Microprocessor based controller with Variable Voltage Variable Frequency drive :**

Improves passenger ride comfort

The variable voltage variable frequency drive system in conjunction with the speed encoder offers speed control over a wide range, and stable torque even at very low and high speeds.

Energy saving

It reduces current flow, heat release in machine room and improves the power factor.

- **High Speed Switching Device :**

Silent operation and low noise levels

High Speed Switch Device employs Insulated Gate Bipolar Transistor (IGBT) which raises the switching frequency beyond the audible range thereby lowering the motor noise level.

- **Pulse Width Modulator & VF Motor with Encoder :**

Smooth control

The Pulse Width Modulator and close loop system guarantees smooth control during acceleration and deceleration and optimum travel time regardless of passenger load variation.

The encoder allows for better levelling, irrespective of the load in the car.

- **RSR - Otis relative System Response Plus :**

Reduced waiting times improving dispatching efficiency

The function of the RSR is to identify the most suitable elevator to be dispatched for attending calls registered at various floors.

- **VF Door Operator :**

Smooth opening and closing of doors

Door opening and closing time governed by the door operator can be precisely and efficiently adjusted.

- **New Copper Wiring :**

Durability

SAFETY UPGRADE

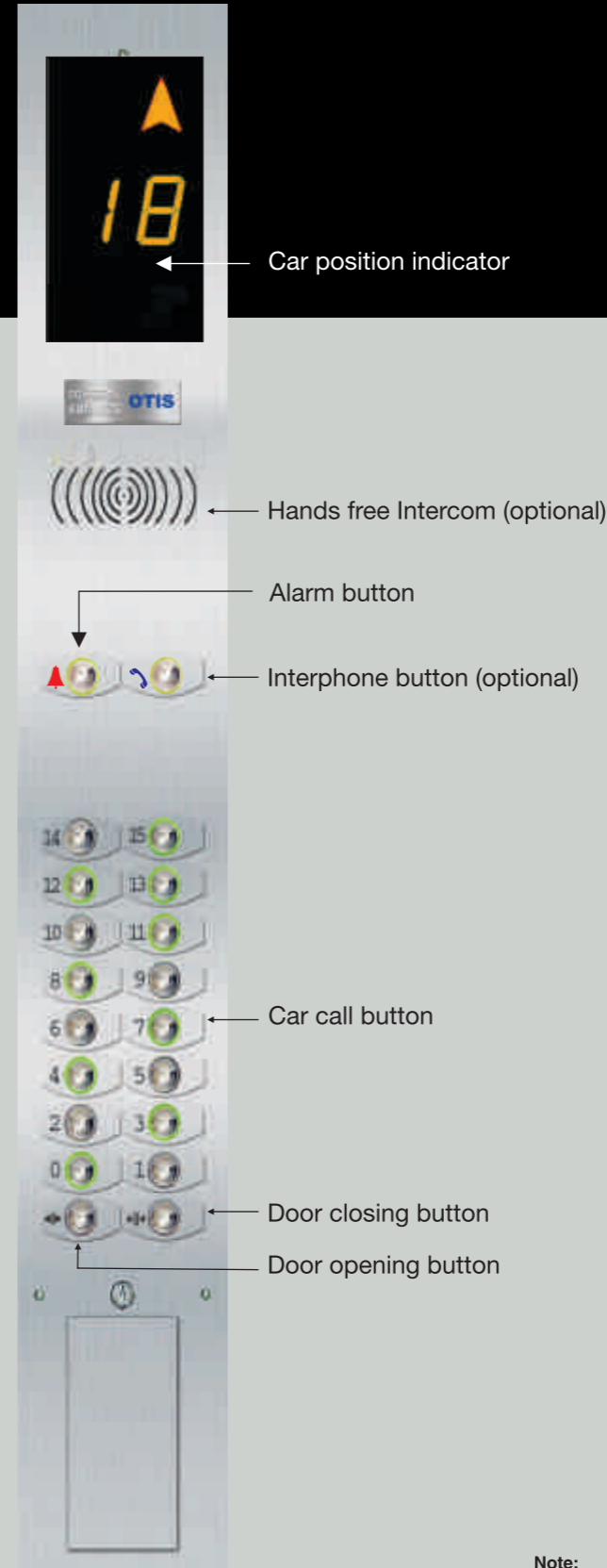
- Battery operated alarm
- Battery operated emergency light

AESTHETIC UPGRADE

- Illuminated call buttons
- Digital position indicators

CAR FIXTURES

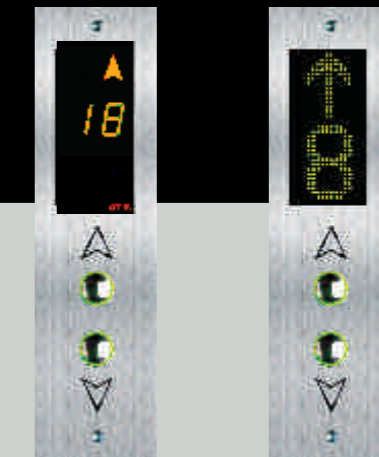
CAR OPERATING PANEL



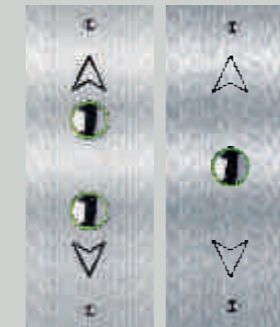
HALL FIXTURES

Gien With Display

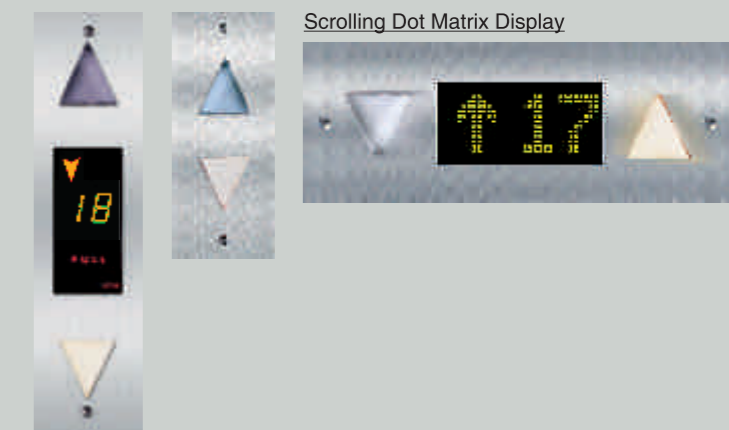
Digital Display (Standard) Dot Matrix Display (Optional)



Without Display



HALL LANTERNS (Optional)



Note:

- In the interest of continuous improvement, details in brochure are subject to change without notice.
- Images shown are representative. Actual design may vary.
- For any query, write to us at modernization.india@otis.com