

NEW EQUIPMENT

---

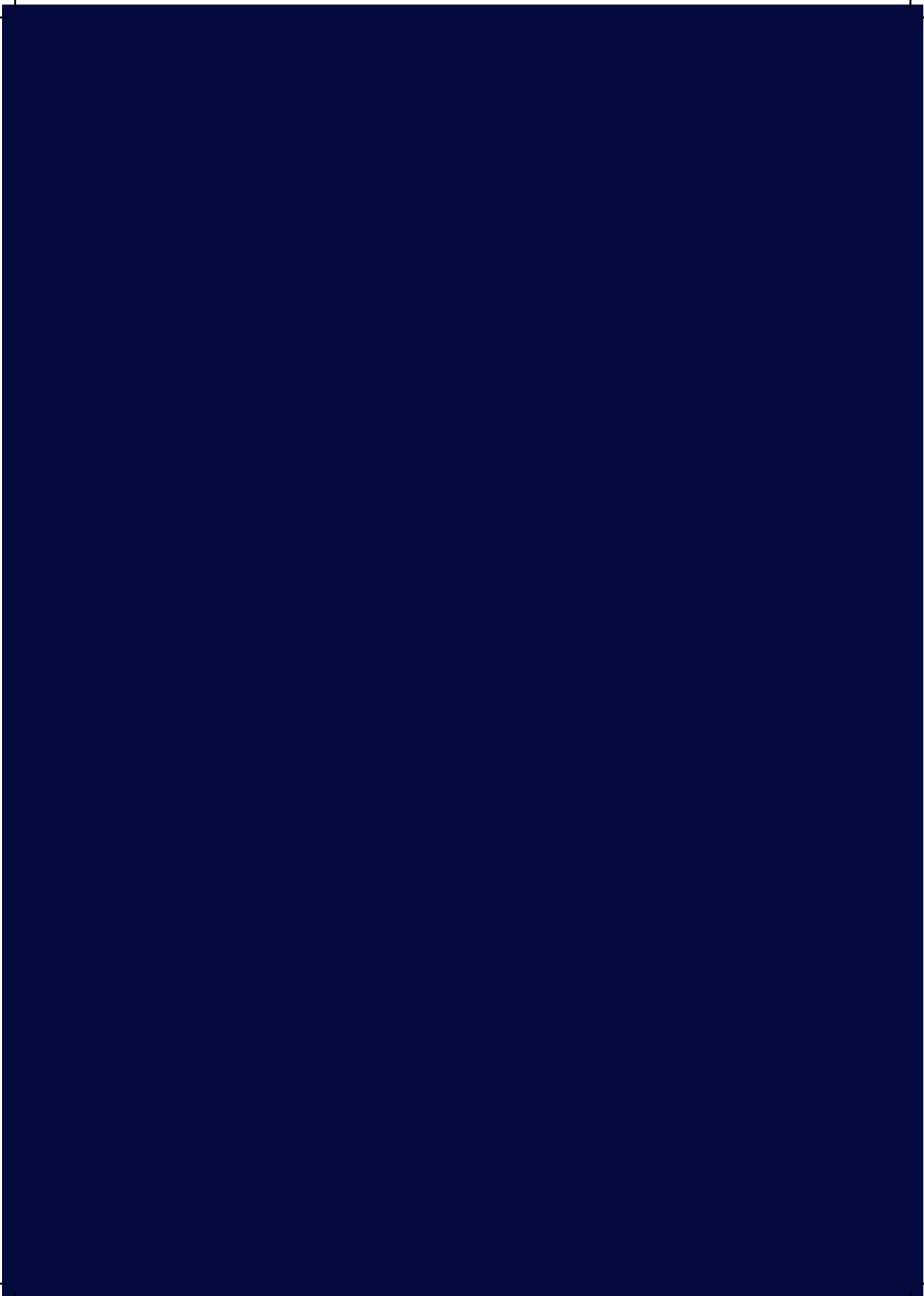
# New age living

---

Gen2® Prime

**OTIS**





---

# Safety that offers peace of mind

---



## ENERGY EFFICIENT

Our ReGen™ drive delivers up to 75% energy savings and produces clean power that minimizes impact on the building's electrical system.



## READY FOR WHAT'S NEXT

Otis ONE™ gives you real-time visibility of your units and Otis Customer Portal lets you track service delivery, view equipment data and communicate with your service team.



## AUTOMATIC RESCUE OPERATION

Battery powered systems deliver passengers safely to the nearest floor during a power failure.



## FLAT BELT WITH PULSE MONITORING

The flat belt replaces traditional steel ropes, allowing it to be constantly monitored for integrity with the help of the Pulse Monitor system. This makes the elevator efficient and reduces inspection downtime.



## RELIABLE SAFETY FOR EVERY SITUATION

A screen of infrared beams on the doors reopens them immediately when an obstacle breaks the screen. Additionally, if the elevator stops between floors, the doors cannot be opened from the inside preventing unauthorized and unsafe passenger rescue.

---



UP TO 75m



320 – 1000 KG



4 – 13 PASSENGERS



1 - 1.75 M/S

### GEN2 PRIME MAIN TECHNICAL SPECIFICATIONS

Machine roomless	Yes
Motor type	Gearless with permanent magnets
Energy regeneration	Regen drive comes standard
Traction system	Flat polyurethane-coated steel belts (2:1 roping)
Energy savings / standby mode	Standard
LED lighting	Standard
The Pulse™ system	Standard

AESTHETICS



# Puristic design for better experience

The Gen2 Prime allows with its simplified cab decorations to focus on the most important: mobility. Thanks to its concept Gen2 Prime brings all benefits from our wide range of high class elevators to social living and offers uncompromising comfort with maximum reliability



## **SIMPLIFIED DESIGN**

Choose between different surfaces and colours to personalize the cab. The materials are high quality and ensure a design that will be remembered.



## **INTUITIVE OPERATION**

Thanks to the fixtures and indicators you will always know where the cab is and how to call it. We also offer solutions for disabled persons in case of need.



## **FLEXIBLE CAR DIMENSIONS**

Our shaft installation offers a variety of car types and allows you to adapt the elevator to your building's needs. By choosing the desired number of passengers the car dimensions will be adjusted right to your requirements.



## **SPACE-SAVING INNOVATION**

With thousands of installed elevators every year we know about the issue with space in new but also existing buildings. Thanks to its concept Gen2 Prime only needs minimal dimensions for the hoistway installation.

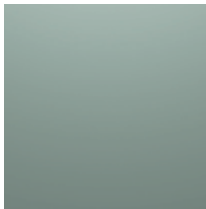
# Standard Design

## CAR PANEL OPTIONS - POWDER COATED

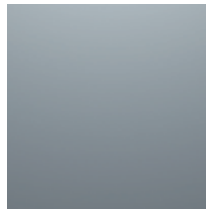
## FLOOR COLOR



Ivory - Base



Pearl - Option



Pebble - Option



Grey - Base



Steel Grey - Base



Sea Blue - Base

## PEBBLE

## PEARL

## LCD DISPLAY



LCD display color (Option)



LCD display white font (Base)



LCD display blue font (Option)

A vertical elevator control panel is mounted on a dark grey wall. It features an LCD display at the top, a speaker grille, a small rectangular display, a row of four buttons, and a larger array of buttons below. Four red callout boxes with white plus signs point to specific features: the LCD display, a COP base, an Ivory base, and the floor. The background is a dark grey wall with vertical paneling.

**LCD DISPLAY WHITE  
FONT - BASE**

**COP BASE**

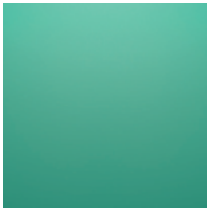
**IVORY - BASE**

**FLOOR: GREY - BASE**



# Classic Design

## CAR PANEL OPTIONS - POWDER COATED



Aqua - Option



Arctic - Option



Brickstone - Option



Pink - Base



Almond - Base



White - Base

## FLOOR COLOR

## AQUA



## ARCTIC



## LCD DISPLAY



LCD display color (Option)



LCD display white font (Base)



LCD display blue font (Option)

The image shows an elevator control panel with a vertical arrangement of components. At the top is an LCD display showing the number '09' and a downward arrow. Below the display are several buttons and a small rectangular panel. The panel is set against a dark, textured background. Four callout boxes with red borders and white text are overlaid on the image, each accompanied by a red square containing a white plus sign. The callouts are: 'LCD DISPLAY WHITE FONT - BASE' (top right), 'COP BASE' (middle right), 'BRICKSTONE' (middle left), and 'FLOOR: ALMOND - BASE' (bottom right).

**LCD DISPLAY WHITE  
FONT - BASE**

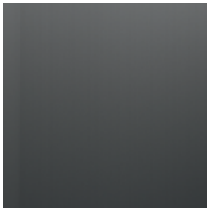
**COP BASE**

**BRICKSTONE**

**FLOOR: ALMOND - BASE**

# Popular Design

## CAR PANEL OPTIONS - STAINLESS STEEL



Mirror - Option



Slate - Base

## FLOOR COLOR



Grey - Base



Steel Grey - Base

## MIRROR



## SLATE



## LCD DISPLAY



LCD display color (Option)



LCD display white font (Base)



LCD display blue font (Option)

The image shows the interior of an elevator with dark grey walls and a light grey floor. A control panel is visible on the right wall, featuring an LCD display and several buttons. Four callout boxes with red borders and white text are overlaid on the image, each accompanied by a red square with a white plus sign. The callouts identify the material finishes for different parts of the elevator: the LCD display, the control panel base, the wall panels, and the floor.

**LCD DISPLAY WHITE  
FONT - BASE**

**COP BASE**

**SLATE - BASE**

**FLOOR: GREY - BASE**

A 3D rendering of an elevator control panel mounted on a wall. The panel is dark grey and features an LCD display at the top showing a blue arrow pointing up and the number '09'. Below the display are several rows of buttons, including two large circular buttons at the top and a grid of smaller buttons below. The panel is set against a wall of vertical panels. Four callout boxes with red borders and white text are positioned to the right of the panel, each with a red square containing a white plus sign. The callouts are: 'LCD DISPLAY WHITE FONT - BASE' (top), 'COP BASE' (middle), 'SLATE - PALE' (bottom left), and 'FLOOR: GREY - BASE' (bottom right).

**LCD DISPLAY WHITE  
FONT - BASE**

**COP BASE**

**SLATE - PALE**

**FLOOR: GREY - BASE**

# Advanced Design

## CAR PANEL OPTIONS



SS Black Hairline



SS Black Mirror



SS Gold Hairline



SS Gold Mirror

## BLACK MIRROR



## GOLD MIRROR



## LCD DISPLAY



LCD display color (Option)



LCD display white font (Base)



LCD display blue font (Option)



LCD DISPLAY WHITE  
FONT - BASE

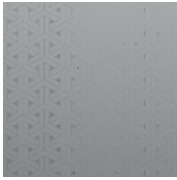
COP BASE

BLACK MIRROR

FLOOR: GREY - BASE

# Special Design

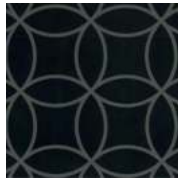
## CAR PANEL OPTIONS



Interlock



Polka Delight



SS Aura Black



SS Aura Gold



SS Splendor Maze



SS Maple Glory Gold



SS Egyptian Gold

## INTERLOCK



## SPENDERMAZE



## LCD DISPLAY



LCD display color (Option)



LCD display white font (Base)



LCD display blue font (Option)





LCD DISPLAY WHITE  
FONT - BASE

SPENDERMAZE

COP BASE

FLOOR: ALMOND - BASE

# Finish and Options

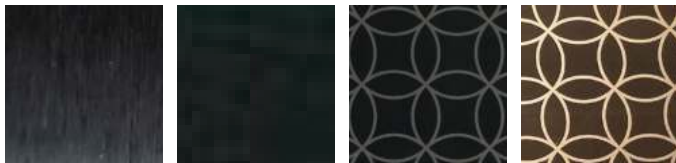
## CAR, RETURN, CAR DOOR, CEILING & COP



Ivory Pebble Pearl Brickstone



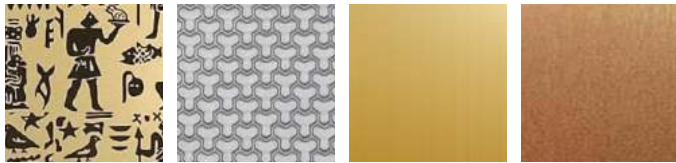
Arctic Aqua Slate Mirror



Black Hairline Black Mirror Aura Black Aura Gold



Interlock Polka Delight Splendormaze Maple Glory



Egyptian Gold Honeycomb Gold Mirror Gold Hairline

## FLOORS | VINYL

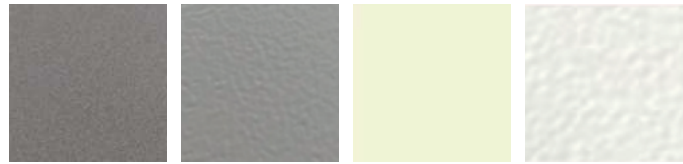


Grey Steel Grey Sea Blue Pink

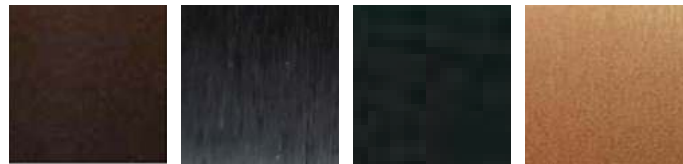


Almond White

## LANDING DOOR FINISH



Silver Grey Grey Cream Broken White



Antique copper Black Hairline Black Mirror Gold Hairline



Gold Mirror

## CEILING



False ceiling without Emergency Exit



False ceiling with Emergency Exit

# Leading-edge technology comes standard

---



## COMFORT AND SILENCE

Flexible belts make Otis machine up to 80% smaller and up to 50% more efficient than conventional geared machines.



## PERFORMANCE

Our patented coated steel belts allow a smooth and quiet ride like never before. No metal-on-metal contacts reduce building vibration and unwanted noises.



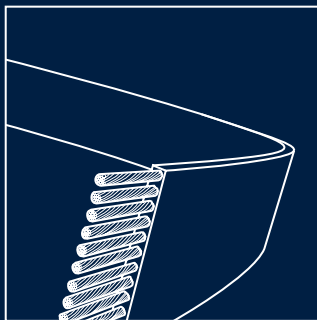
## SAFETY AND RELIABILITY

Pulse from Otis provides 24x7 analysis of the belts to identify wear and repair needs proactively, meaning less inspection downtime and more safety and efficiency.

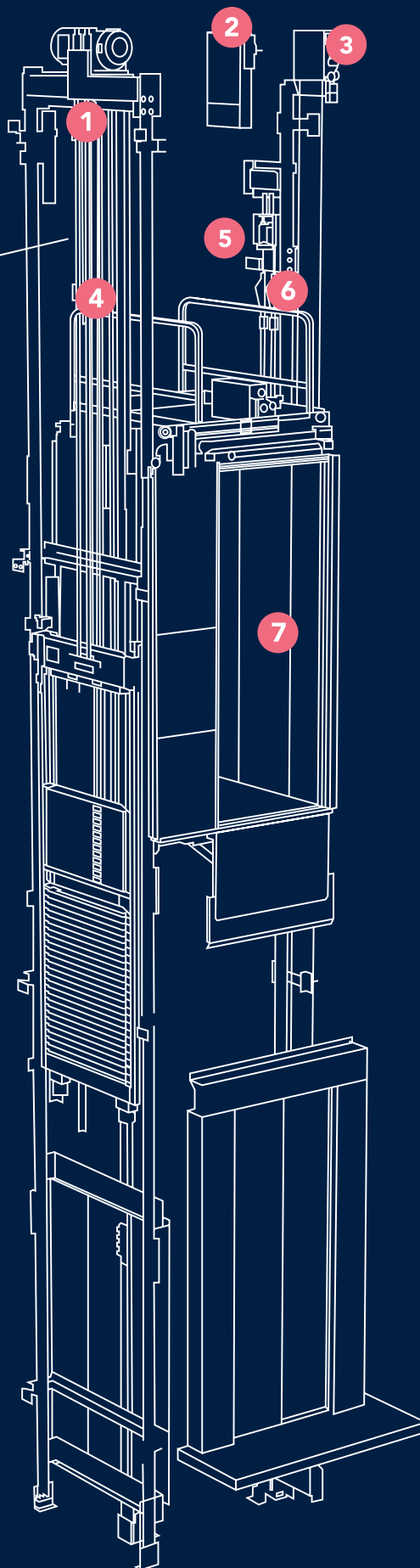


## MONITORING

REM™ (Remote Elevator Monitoring) accumulates real-time information and supports to accurately identify and correct most issues quickly. This optional, internet-based system can take the guesswork out of repairs and can significantly reduce service interruptions.



Patented Otis Gen2 belts replace conventional ropes



- 1 MACHINE ROOMLESS**  
All equipment in the hoistway
- 2 GEARLESS MACHINE**  
up to 50% smaller / more efficient
- 3 BELTS**  
up to 20% lighter than ropes, lubricant free and up to 3 times longer lifetime
- 4 PULSE**  
24/7 belts monitoring
- 5 REGEN DRIVE**  
Up to 75% more efficient than non-regenerative drives
- 6 LED LIGHTING**  
Up to 80% savings when combined with standby features
- 7 STANDBY MODE**  
Up to 50% savings on Gen2 elevator standby power

\*depending on building and hoistway

# Technical

**For EN81-1 & EN81-20**

Number of passenger	Duty (kg)	Door type	Door opening	Car inside		Hoistway	
				Width	Depth	Width	Depth
4	320	TLD	700	840	1050	1375	1350
			800	1000	950	1525	1300
		CLD	700	1000	950	1650	1300
5	400	TLD	700 , 800	1000	1100	1525	1400
			800	950	1150	1525	1450
		CLD	700	1000	1100	1650	1400
6	450	TLD	800	1000	1250	1525	1550
		CLD	700	1000	1250	1650	1550
8	630	TLD	800	1100	1400	1700	1700
			800	1100	1400	1800	1725
		CLD	800	1400	1100	2000	1450
10	800	TLD	900	1350	1400	1950	1700
		CLD	900	1350	1400	2050	1675
13	1000	TLD	900	1100	2100	1700	2400
			1000	1100	2100	1800	2400
			900	1100	2100	2000	2375
		CLD	900	1600	1400	2175	1675
			1000	1600	1400	2175	1675

Speed	Pit	Overhead
1m/s	1100	3700 (3800)
1.75m/s	1300	4200 (4300)

( ): Door opening height:2100mm

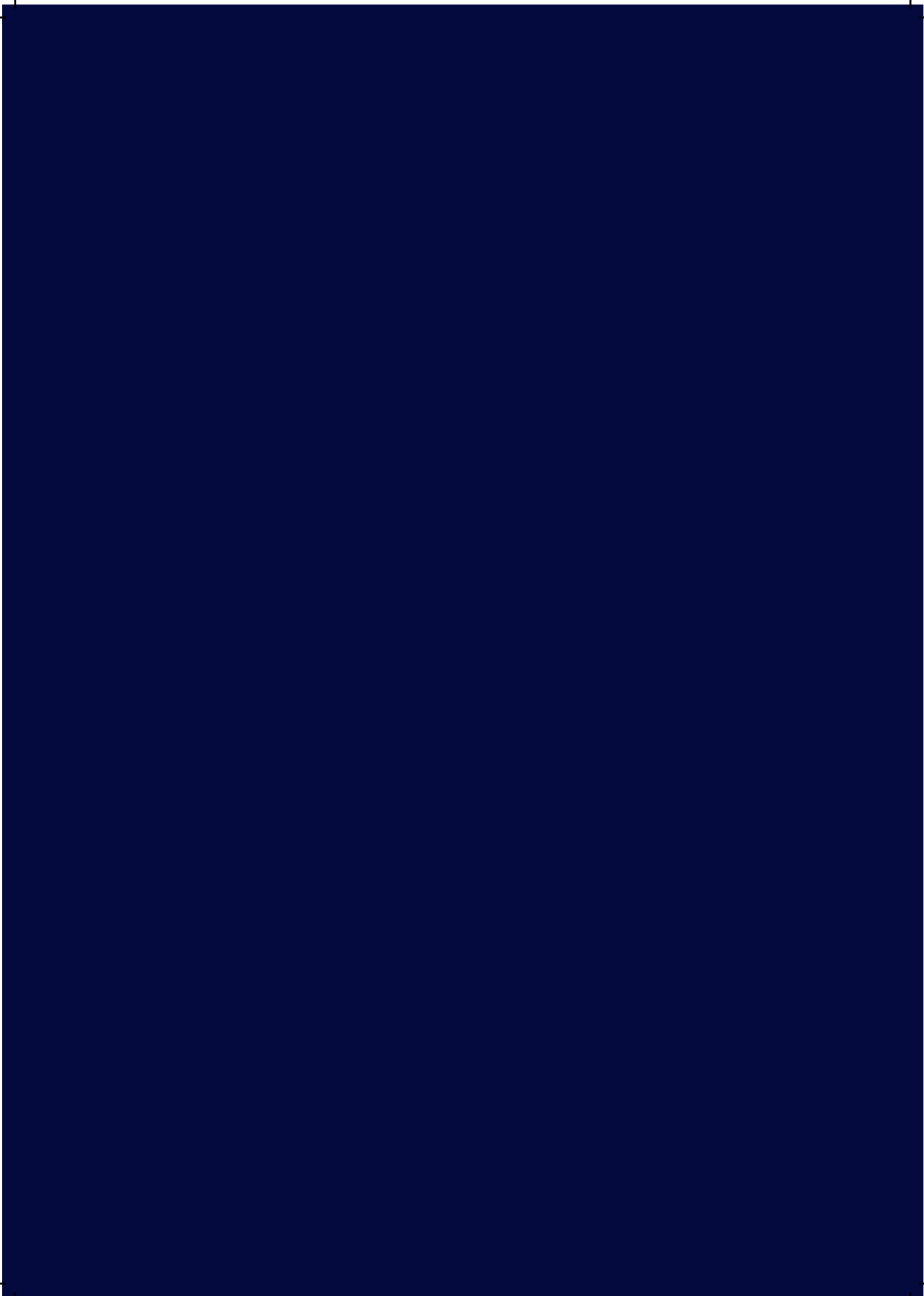
## Otis Signature Service

Every day, our teams roll up their sleeves to keep two billion people on the move. We continue to invest in new tools and processes, so our highly trained mechanics and support teams can ensure a faster return to service. It's all part of our commitment to moving the world more safely, efficiently and reliably.

## OTIS LINE - 24/7 expert support

Every hour of every day, the OTISLINE call center is here for you. This service puts you in touch with experts trained in every aspect of your system's operation and what to do when issues arise. With every call, the OTISLINE call center is the fast track to the resolution you need.





— Otis gives people freedom to connect and thrive in a taller, faster, smarter world. The global leader in the manufacture, installation and servicing of elevators and escalators, we move 2 billion people a day and maintain more than 2.1 million customer units worldwide – the industry's largest Service portfolio. You'll find us in the world's most iconic structures, as well as residential and commercial buildings, transportation hubs and everywhere people are on the move. Headquartered in Connecticut, USA, Otis is ~68,000 people strong, including 41,000 field professionals, all committed to meeting the diverse needs of our customers and passengers in more than 200 countries and territories. To learn more, visit [www.otis.com](http://www.otis.com) and follow us on LinkedIn, Instagram, Facebook and Twitter @OtisElevatorCo.