

OTIS

Modernization



Arise™ MOD

YOU CHOOSE THE COST AND SPEED OF YOUR ELEVATOR
MODERNIZATION WITH THE ARISE MOD PHASED SOLUTION

Why modernize with Otis now?

ENHANCE SAFETY

Upgrade your system to the latest safety standards and regulations. At Otis, safety is always first.

IMPROVE PERFORMANCE & RELIABILITY

Minimize shutdowns and increase the availability of your elevator. With Otis, you get access to cutting edge and connected solutions.

MINIMIZE THE UNEXPECTED

Control the pace, cost and planning of your project thanks to our proven experience.

BOOST SUSTAINABILITY

Manage your impact on the environment by increasing efficiency and reducing energy consumption thanks to our wide range of Packages tailored to your building's needs.

BRING PASSENGER EXPERIENCE TO THE NEXT LEVEL

Increase the appeal of your property and provide shorter waiting times and more comfortable, accessible, connected journeys thanks to our wide range of contemporary aesthetics and advanced technologies.



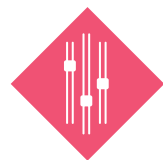
Explore the benefits of the Arise™ MOD solution

Put yourself in control. You choose the cost and speed of your elevator modernization with the Arise MOD phased solution. Upgrade your elevators to the latest safety standards and access the latest advanced technology, improving your equipment's reliability while elevating your passenger experience.



ENHANCE SAFETY

- ◆ **Bring your elevator control** system up to compliance with the latest European elevator safety standard (EN-81-20).
- ◆ **Reduce common tripping hazards** thanks to a new frequency variation electronic drive that more precisely controls elevator speed for improved floor-leveling accuracy.
- ◆ **Improve the reliability of your equipment** with 24/7 equipment monitoring via our Otis ONE™ IoT digital platform.



IMPROVE PERFORMANCE & RELIABILITY

- ◆ **Create a smoother and more comfortable ride** with a new machine and new cables.
- ◆ **Reduce shutdowns and repairs** with a new state-of-the-art car door system that more precisely controls the opening and closing of elevator doors.
- ◆ **Take advantage of our phased approach** and leverage our two packages: Prime and Plus.



MINIMIZE THE UNEXPECTED

- ◆ **Plan your budget with our experts** from the earliest stages of capital planning to ongoing operations.
- ◆ **You choose the cost and speed** of your elevator modernization within your budget and timeline.
- ◆ **Minimize disruption and installation time** with our expert installers. Arise MOD retains the existing slab configuration, limiting the need for structural work.



BRING PASSENGER EXPERIENCE TO THE NEXT LEVEL

- ◆ **Choose from a wide variety** of new landing fixtures, hall signage, in-car control panels and modern cab designs to match your style and budget.
- ◆ **Create a more accessible** and inclusive experience by adding features such as Braille and voice announcements to elevator calls.
- ◆ **Provide easier travel and shorter wait times** thanks to our Compass® 360 destination management system.



BOOST SUSTAINABILITY

- ◆ **Choose which components to replace and when**, so you can keep reliable parts throughout their entire lifecycle. This results in less waste / disposal of parts. Select your energy-saving solution.
- ◆ **Reduce energy consumption** by as much as 50% vs. legacy non-regenerative geared systems and by as much as 75% vs. hydraulic ones, with our ReGen™ drive, which comes standard on our Arise MOD phased solution.



A new level of connectivity

Otis ONE is our IoT solution that connects your Otis and non-Otis elevator to the cloud to deliver a seamless passenger experience. From real-time data insights to remote services, enhance your building's performance.



The right partner with the right solutions



Arise™ MOD Prime

This package provides a replacement of the elevator's control system with digital technologies that reduce the risk of spare parts shortages and allow for easier future upgrades. Prime delays the obsolescence of key elevator components and reduces unplanned downtime.

Standard Upgrades

- 1 Controller with Otis ONE™ IoT
- 2 Frequency variation drive (ReGen™ ready for future upgrades)
- 3 Machine encoder (when needed)
- 4 In-car control panel
- 5 Landing fixtures and hall signage

Options

- 6 Car door operator
- 7 eView™ in-car display
- 8 Car interior (panel, ceiling, floor)
- 9 Overspeed governor



Arise™ MOD Prime Key Benefits

- ◆ Enhance safety
- ◆ Improve performance
- ◆ Minimize disruption

Discover a flexible way to modernize

To learn more about modernization packages for your building or to request a quote visit: [otis.com/mod](https://www.otis.com/mod)

Arise™ MOD Plus Key Benefits

- ◆ Enhance safety
- ◆ Boost sustainability
- ◆ Bring passenger experience to a higher level

Arise™ MOD Plus

This package includes a replacement of the elevator's traction system with a geared or gearless machine, and a door operator to improve reliability and efficiency.

Standard Upgrades

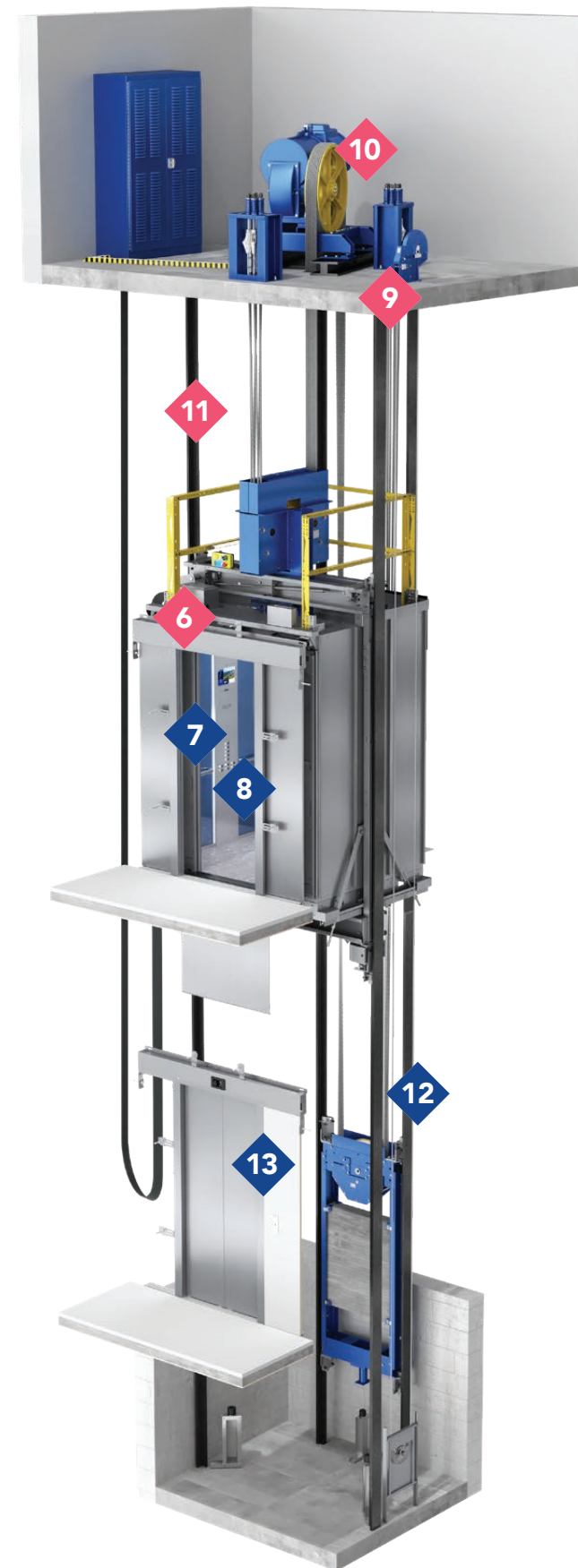
- ◆ **All Arise MOD Prime upgrades**
- ◆ 6 Car door operator
- ◆ 9 Overspeed governor
- ◆ 10 Geared or gearless machine with ReGen™ drive
- ◆ 11 Traction ropes

Options

- ◆ 7 eView™ in-car display
- ◆ 8 Car interior
- ◆ 12 Retain car and counterweight pulleys (2:1 layout)
- ◆ 13 Landing door control

Discover a flexible way to modernize

To learn more about modernization packages for your building or to request a quote visit: otis.com/mod



You choose the cost and speed of your modernization with the Arise™ MOD phased solution

Modernizing your elevators for improved performance, safety and uptime is the right thing to do.

Upgrade to Arise™ MOD Prime or Plus

Discover a flexible way to modernize your elevators with Otis MOD solutions.

With so many choices, a modernization can feel overwhelming —

Should you prioritize certain parts?

How much will it cost, and how long will my elevators be out of service?

Put yourself in control. With the Arise MOD phased solution, and the guidance and experience of our experts from the earliest stages of capital planning to ongoing operations, you will get the answers to your questions and the solutions that suit your building best.

IS IT TIME TO MODERNIZE?

If your elevator system is experiencing one or more of the following issues, we can help.

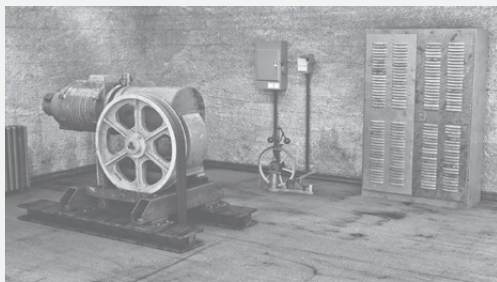
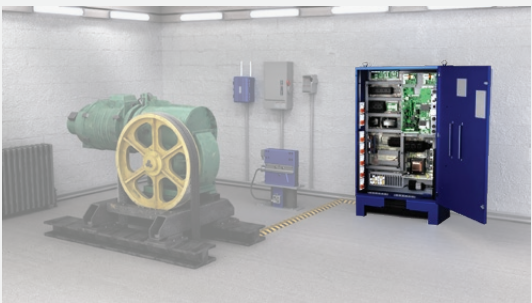


Image represents roped machine and controller before a modernization

- ☐ Not compliant with the latest safety standards and regulations
- ☐ Frequent repairs due to car door issues
- ☐ Outdated fixtures
- ☐ Lack of accessible features

YOU CAN START WITH ARISE MOD PRIME (PHASE 1)

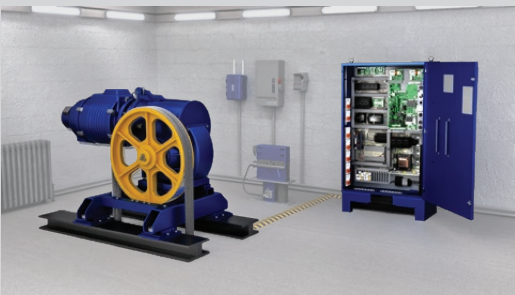
- + A new electronic controller that complies with the latest European elevator safety standard (EN-81-20).



- + Improve the reliability of your equipment with 24/7 equipment monitoring via our Otis ONE™ IoT digital platform.

OR GO STRAIGHT TO ARISE MOD PLUS (PHASE 2)

- + Create a smoother and more comfortable ride with a new machine and new cables.



- + Reduce shutdowns and repairs with a new state-of-the-art car door system that more precisely controls the opening and closing of elevator doors.

WE'RE INTRODUCING A NEW PHASE 2 SOLUTION!

You can now upgrade your Arise roped elevator to Otis Gen2® MOD belt technology. Experience enhanced ride quality with a gearless machine and coated steel belts.

Learn more at otis.com/mod



Otis Modernization Solutions

Gen2® MOD | Arise™ MOD | SkyRise™ MOD | Link™ MOD

OTIS

Otis is the world's leading elevator and escalator manufacturing, installation and service company. We move 2.4 billion people a day and maintain approximately 2.4 million customer units worldwide, the industry's largest Service portfolio. Headquartered in Connecticut, USA, Otis is 72,000 people strong, including 44,000 field professionals, all committed to manufacturing, installing and maintaining products to meet the diverse needs of our customers and passengers in more than 200 countries and territories worldwide. To learn more, visit www.otis.com and follow us on LinkedIn, Instagram, and Facebook [@OtisElevatorCo](https://www.facebook.com/OtisElevatorCo).



Visuals are for illustrational purposes only, components and their position may vary depending on installation and location.

www.otis.com

EMEA-EN-0325

© 2025 Otis Elevator Company