

OTIS

New age living

Gen2 Prime



MANUFACTURED AT A WORLD-CLASS FACILITY

Made at one of our global Otis and ISO certified factories - Bengaluru factory, the Gen2® Prime elevator has been put through rigorous tests that surpass safety code standards. We created our set of even more demanding guidelines that surpass global standards – the Otis Worldwide E3 policy. The parts and components undergo a battery of performance, safety and lifetime qualification testing that includes more than 50 critical tests during the manufacturing process.

Gen2 - Powerful Technology in a Compact Design

The Gen2 delivers superior performance in a space-saving design, Coated steel belts have a significantly smaller bending radius than wire rope. This engineering breakthrough paved the way for other innovations: our ultra-compact permanent magnet gearless machine is 80 percent smaller and more efficient than conventional geared machines. The steel belts also last twice as long as conventional steel ropes, without the need for any lubrication.



20%
lighter than ropes

PURE STRENGTH

Lightweight belts eliminate the need for lubricants and hazardous waste disposal. Our Pulse™ system monitors belt integrity and eliminates inspection downtime.

50%
smaller machine

COMPACT BUT POWERFUL

The use of innovative flat belts has allowed us to engineer key components into a compact, integrated unit. The permanent magnet gearless machine is 50% smaller and more energy efficient than conventional geared ones.



Up to
75%
energy savings

POWER REGENERATION

Redirect excess energy into the building's electric grid using regenerative technology. Our ReGen™ drive delivers as much as 75% energy savings and produces clean power that minimizes impact on the building's electrical system.



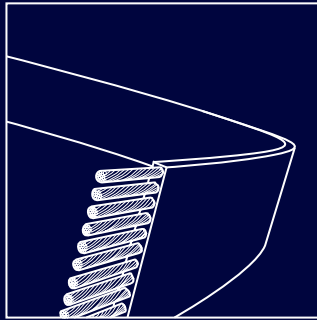
SMOOTH DECELERATION

The Gen2 Prime product is offered with an option for smooth deceleration in the event of power outages to enhance passenger comfort.



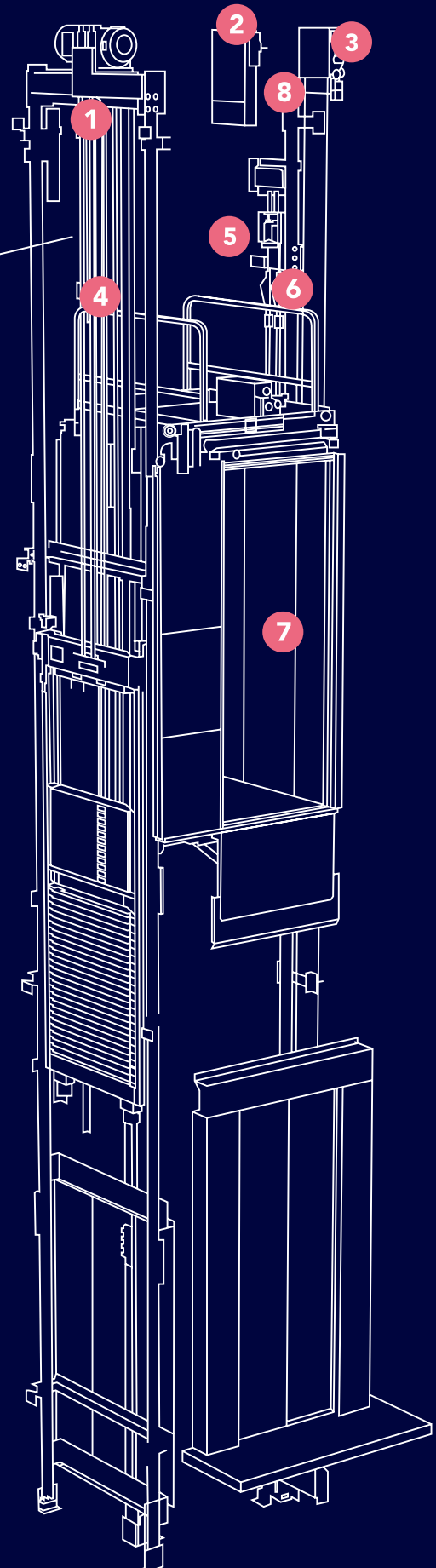
AUTOMATIC RESCUE OPERATION

Battery powered systems deliver passengers safely to the nearest floor during a power failure.



Patented Otis Gen2 belts replace conventional ropes

- 1 MACHINE ROOMLESS**
All equipment in the hoistway
- 2 GEARLESS MACHINE**
As much as 50 % smaller / more efficient
- 3 BELTS**
As much as 20 % lighter than ropes, lubricant free
- 4 PULSE**
24/7 belts monitoring
- 5 REGEN DRIVE**
As much as 75 % more efficient than non-regenerative drives
- 6 LED LIGHTING**
As much as 80 % savings when combined with standby features
- 7 STANDBY MODE**
As much as 50 % savings on Gen2 elevator standby power
- 8 OTIS ONE IOT Compatible**
Harness the power of IOT for a proactive maintenance experience



*depending on building and hoistway

World Class Comfort and Efficiency

The Gen2[®] focuses on performance without compromising on comfort. With the revolutionary belt technology, we reduced metal-on-metal contact and dampened vibrations to ensure the Gen2[®] ride is smooth and quiet.



COMFORT

Our systems minimize noise and vibration and render the elevator's movement barely perceptible, giving passengers what they're looking for – a quiet, comfortable ride.



ENERGY SAVINGS AS MUCH AS 75%

Fitted with the ReGen[™] drive, the Gen2[®] Prime can use 75% less energy than conventional geared systems with non-regenerative drives, while providing clean power to help run other building systems.



SLEEP MODE

Lights and fans are shut down when not in use and are automatically restarted with the touch of a button making the LED lighting as much as 75% more efficient than conventional lighting.



ZERO LUBRICATION

The coated steel belt and Gen2[®] machine require no additional lubrication, providing for a cleaner hoistway and environment.



UP TO 75m



320 – 1000 KG



4 – 13 PASSENGERS



1 - 1.75 M/S

GEN2 PRIME MAIN TECHNICAL SPECIFICATIONS

Machine roomless	Yes
Motor type	Gearless with permanent magnets
Energy regeneration	Regen drive comes standard
Traction system	Flat polyurethane-coated steel belts (2:1 roping)
Energy savings / standby mode	Standard
LED lighting	Standard
The Pulse™ system	Standard



Standard features

Parameter	Feature details	Parameter	Feature details
ADO	Advance door opening (1mps >30m rise, 1.75mps - all rises)	EFS	Emergency fireman service
ALARB	Alarm button and acoustic alarm device	ERO	Electrical recall operation
ANS-C	Anti-nuisance car call	ESB	Emergency stop switch
ARD-1	Automatic return destination (Home landing)	FAN	Forced car ventilation with auto fan cut-off
ARO	Automatic rescue operation (Battery Operated)	FCO	Full collective operation
BID	Belt inspection device for coated steel belt	HAD	Hoistway access detection
BSM	Basement service	HDI	Hall direction indicator (In hall button box)
CDD	Car door detector (Infra-red curtain)	HPI	Integrated HPI & Hall buttons
CHCS	Cut-off hall call switch	HTTL	Hall tell tale light
CPI	Monochrome LCD position indicator in car	ICU	Intercommunication car - lobby - machine room
CTTL	Car tell tale lights (Call registration illumination)	ISC	Independent service (Start with constant pressure on car button)
DCB	Door close button	LED	Car light (Automatic on/off)
DOB	Door open button	LNS-C	Load non-stop device (In car)
DTP	Door time protection	LW	Load weighting device
DXT	Extra door time (Lobby and parking)	MRO	Manual rescue operation
DZI	Door zone indicator	NGD	Door nudging
E120	E120 Fire rated landing doors	RELEV	Relevelling feature (1mps >30m rise, 1.75mps - all rise)
ECU	Emergency car light	SD	Smooth Deceleration for all 1.75mps; 1mps upto 630kgs

Optional features

Parameter	Feature details	Parameter	Feature details
ACCB	Audible car call button	EPO	Emergency power operation
ATT	Attendant operation	G4C	Car group operation
BIO	Provision for Biometric access	GLD	Non Fire rated glass doors
CCM	Chime in car	PKS	Parking key switch
CCTV	Closed Circuit TV Cable - CAT6 type	SAO	Security access
CPI	Color LCD display position indicator in car	SD	Smooth deceleration for >800kgs, 1mps
CRO	Provision for car reader access	SSM	Speech synthesis module
DCO	Down collective operation	REV	180 degrees opening
EFO	Emergency fireman operation		

Popular Design: Stainless Steel Hairline

LCD DISPLAY WHITE
FONT - BASE

+

COP BASE

+

STAINLESS STEEL HAIRLINE

+

FLOOR: GREY - BASE

+

Standard Design: Powder coated-single tone



IVORY



PEARL



PEBBLE**

Classic Design: Powder coated-dual tone



AQUA



ARCTIC



BRICKSTONE**

Popular Design: Stainless Steel



SLATE



MIRROR



REFLECTO

*Colours and finishes shown are indicative. Please allow for minor variations.
** Textured finish

Advanced Design

1
LOBBY



Advance Design: Stainless Steel Hairline and Mirror Combination



Gold Mirror



Black Mirror



Rose Gold Mirror



Bronze Mirror

Special Design



Special Design: Stainless Steel with Etched Finishes



Champagne Gold Rhombus



Rose Gold Paisley



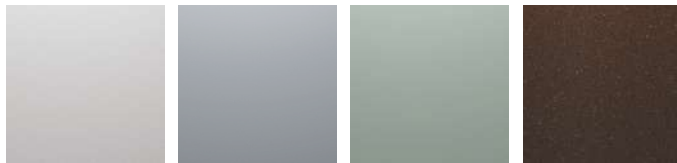
SS Woven Axcent



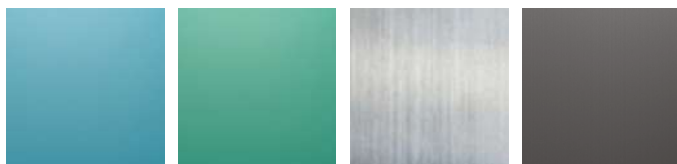
Bronze Mirror Leather

Finish and Options

CAR AND CAR DOOR



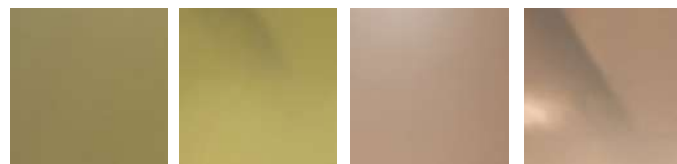
Ivory Pebble Pearl Brickstone*



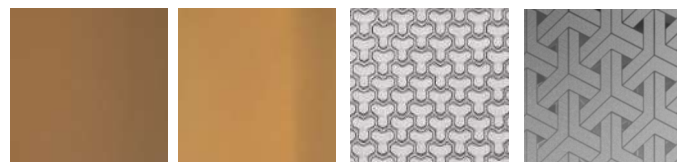
Arctic Aqua SS Hairline Mirror



Black Hairline Black Mirror Gold Hairline Gold Mirror



Champagne Gold Hairline Champagne Gold Mirror Rose Gold Hairline Rose Gold Mirror



Bronze Hairline Bronze Mirror Honeycomb Interlock Finish



Aura Bronze Aura Champagne Gold Aura Black Bronze Leather

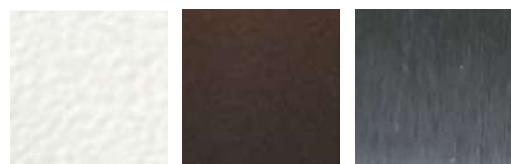


SS Woven Rhombus Paisley Array

LANDING DOOR FINISH



Silver Grey Grey* Cream



Broken White* Antique copper Black Hairline

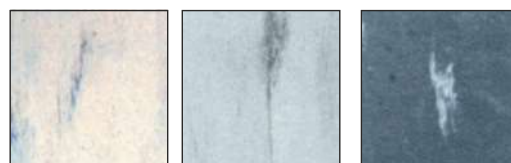


Black Mirror Gold Hairline Gold Mirror

FLOORING (VINYL)



Sea Blue Pink Almond



White Grey Steel Grey

CEILING



CD 61



CD 62



CD 63

*Textured finish

Fixtures

Car Operating Panel



Hall Fixtures



Technical Specifications

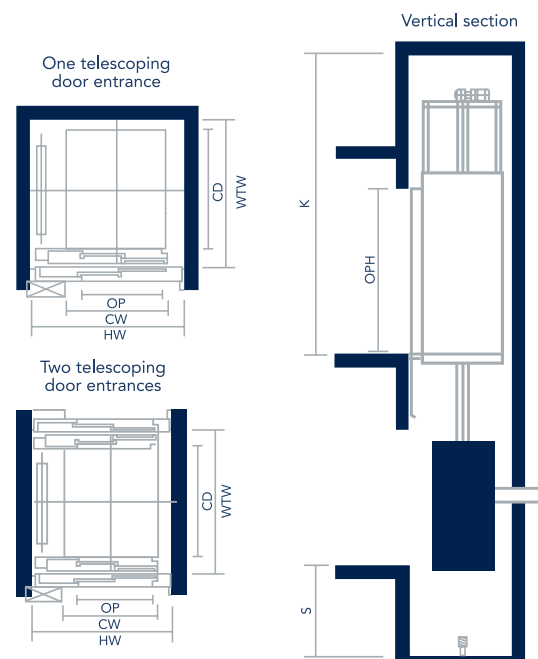
For EN81-1 & EN81-20*

Number of passenger	Duty (kg)	Door type	Door opening	Car inside		Hoistway	
				Width	Depth	Width	Depth
4	320	TLD	700	840	1050	1375	1350
			800	1000	950	1525	1300
		CLD	700	1000	950	1650	1300
5	400	TLD	700 , 800	1000	1100	1525	1400
			800	950	1150	1525	1450
		CLD	700	1000	1100	1650	1400
6	450	TLD	800	1000	1250	1525	1550
			700	1000	1250	1650	1550
		CLD	700	1000	1250	1650	1550
8	630	TLD	800	1100	1400	1700	1700
			800	1100	1400	1800	1700
		CLD	800	1400	1100	2000	1450
10	800	TLD	900	1350	1400	1950	1700
			900	1350	1400	2050	1675
		CLD	900	1100	2100	1700	2400
13	1000	TLD	1000	1100	2100	1850	2400
			900	1100	2100	2000	2375
			900	1600	1400	2175	1675
		CLD	1000	1600	1400	2175	1675

Speed	Pit	Overhead
1m/s	1000	3700 (3800)
1.75m/s	1300	4300 (4400)

() : Door opening height:2100mm

Speed	Pit	Overhead
1m/s	1000	3700 (3800)
1.75m/s	1300	4300 (4400)



*Dimensions are on mm

Otis gives people freedom to connect and thrive in a taller, faster, smarter world. The global leader in the manufacture, installation and servicing of elevators and escalators, we move 2 billion people a day and maintain more than 2.1 million customer units worldwide – the industry's largest Service portfolio. You'll find us in the world's most iconic structures, as well as residential and commercial buildings, transportation hubs and everywhere people are on the move. Headquartered in Connecticut, USA, Otis is 70,000 people strong, including 41,000 field professionals, all committed to meeting the diverse needs of our customers and passengers in more than 200 countries and territories. To learn more, visit www.otis.com and follow us on LinkedIn, Instagram, Facebook and Twitter @OtisElevatorCo.