

GEN2® Core

OTIS

Otis Elevator Company is the world's leading manufacturer and maintainer of people-moving products including elevators, escalators and moving walkways.

Founded more than 160 years ago by the inventor of the safety elevator, Otis offers products and services through its companies in 200 countries and territories, and maintains more than 1.8 million elevators and escalators worldwide.

Otis is a part of UTC Building & Industrial Systems, a unit of United Technologies Corp., a leading provider to the aerospace and building systems industries worldwide. For more information, visit www.otis.com or follow @OtisElevatorCo on Twitter.

OFFICES:

Head Office & Western Region (Mumbai Operations):
Otis Elevator Company (India) Ltd.,
9th Floor, Magnus Tower,
MindSpace, Link Road,
Malad (West), Mumbai - 400 064.
Tel.: 022 - 2844 9700 / 6679 5151,
Email: response@otis.com

Eastern Region:
Otis Elevator Co. (I) Ltd.
Victoria Park, Level 2
Block : GN, Plot no. 37/2
Sector V, Salt Lake
Kolkata - 700091
Tel.: 033 - 40524300

Northern Region:
271 & 272, Aggarwal Cyber Plaza-II,
C-7, Netaji Subash Place,
Pitampura, New Delhi - 110034.
Tel.: 011 - 46069000 / 46069211 /
46069100

Southern Region:
Otis House, MK Towers,
27, Langford Road, Shanti Nagar,
Bangalore - 560025.
Tel.: 080 - 2211 1190, 40314500

Western Region - Area Operations:
1st Floor, Amar Synergy Building,
Next to Vijay Sales & Sadhu Vaswani
Chowk, Near Pune Railway Station,
Pune - 411001.
Tel.: 020 - 67045100

MANUFACTURING:

Bengaluru:
No.92, Kiadb Industrial Estate,
Phase II, Jigani Industrial Area,
Anekal Taluk, Bangalore - 560105.
Tel.: 080 - 782 5401 / 5402 / 5403
Email: response@otis.com

SERVICE CENTRES:

Western Region:
Mumbai, Navi Mumbai,
Thane, Nashik.

Eastern Region:
Agartala, Angul, Bhubaneswar,
Bokaro, Dhanbad, Durgapur,
Guwahati, Jamshedpur,
Jhadsuguda, Kahalagaon, Kolkata,
Patna, Ranchi, Shillong, Siliguri.

Northern Region:
Agra, Aligarh, Allahabad, Amritsar,
Bareilly, Chandigarh, Dehradun,
Ghaziabad, Gurgaon, Gwalior,
Haridwar, Jalandhar, Jaipur, Jodhpur,
Jammu, Kanpur, Kota, Ludhiana,
Lucknow, Meerut, Moradabad,
New Delhi, Noida, Rohtak, Shimla,
Shaktinagar, Sonebhadra, Srinagar,
Udaipur, Varanasi.

Southern Region:
Bengaluru, Calicut, Chennai,
Coimbatore, Ernakulam, Erode,
Hubli, Hyderabad, Kaiga, Kottayam,
Madurai, Mangalore, Mysore,
Ootakamund, Pondicherry,
Quilon, Ramagundam, Salem,
Thiruvananthapuram, Thirunelveli,
Trichy, Trichur, Vellore, Vijaywada,
Vishakapatnam.

Western Region - Area Operations:
Ahmedabad, Ankleshwar,
Aurangabad, Bhopal, Goa, Indore,
Jabalpur, Kolhapur, Korba, Nagpur,
Pune, Rajkot, Raipur, Solapur, Surat,
Vadodara, Valsad.



www.otis.com
INDIA-EN-0918
© 2018 Otis Elevator Company



Building technology for the real world

Exceptional. It's hard to define but exciting to experience. And that's exactly what you'll discover with the Gen2® Core elevator from Otis.

The revolutionary Gen2 is everything you want in an elevator: compact, efficient, reliable. And a pleasure to ride.

The Gen2 elevator is transforming the industry we created more than 160 years ago. Perfect for residential use, it's among our best-selling elevators ever.

The reason is simple. The Gen2 is simply exceptional.



Space

The compact Gen2 system provides architects with greater design flexibility and building owners with more rentable space.



Efficiency

Our patented flat-belt technology, pioneering ReGen™ drives and gearless machines make the Gen2 elevator among the most energy-efficient elevators on the planet.



Comfort

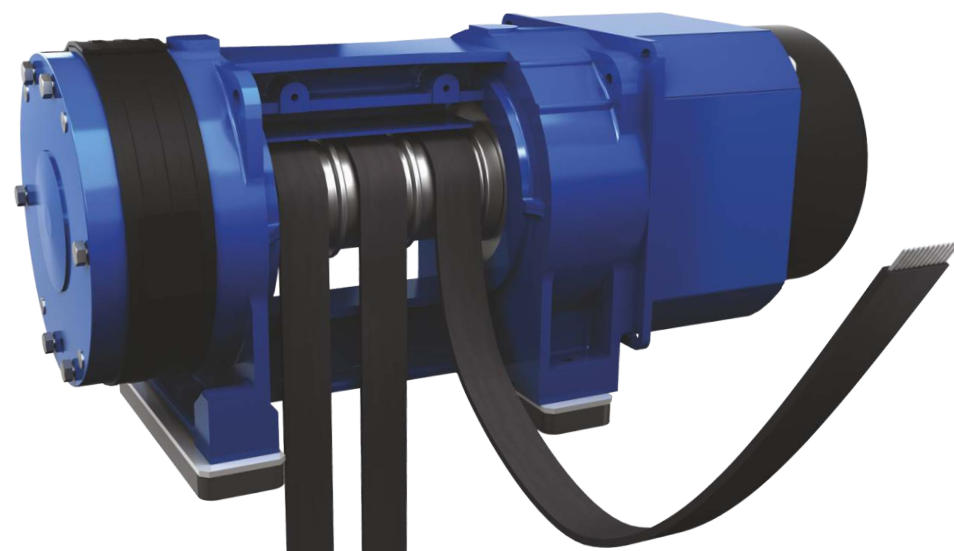
Our systems minimize noise and vibration and render the elevator's movement barely perceptible, giving passengers what they're looking for – a quiet, comfortable ride.



Reliability

Built in ISO-certified factories, with a lifetime of service in mind, every Gen2 elevator offers superior reliability.





80%
SMALLER

The Gen2 delivers superior performance in a space-saving design. Coated steel belts have a significantly smaller bending radius than wire rope. This engineering breakthrough paved the way for other innovations: our ultra-compact permanent magnet gearless machine is 80 percent smaller and more efficient than conventional geared machines. The steel belts also last twice as long as conventional steel ropes, without the need for any lubrication.



Machine-roomless configuration

The Gen2 machine-roomless elevator components are so compact, they fit inside the hoistway. This eliminates the need for an extra room on top of your building for elevator components. The result is a system that saves construction cost and frees up valuable floor space to support your design vision.



Compact machine-room configuration

The compact machine-room configuration reduces the space requirements for the Gen2 system to no larger than the hoistway footprint, reducing construction costs and optimizing rooftop space.



We take pride in our environment – from the crafted spaces inside a structure to the natural world outside. That's why the new Gen2 system is designed to minimize its impact on the environment and maximize energy efficiency.

Reducing energy consumption by:

10x

Long-Life LED Lighting

LED illumination, standard on the Gen2 system, reduces energy consumption and lasts up to 10 times longer than conventional fluorescent lamps.

75%

The ReGen™ drive

Regenerative technology, pioneered by Otis and standard on the Gen2 system, uses up to 75 percent less energy than a conventional geared elevator while producing power with lower harmonic distortion, minimizing the impact on the building's electrical system.

75%

Sleep Mode

Lights and fans are shut down when there's no demand, making the LED lighting up to 75 percent more efficient than conventional lighting. The system seamlessly springs back to life with the press of a call button.

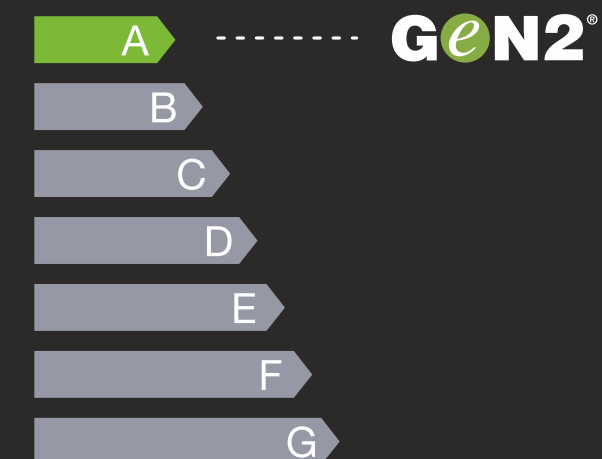
Zero

Lubrication

The Gen2 machine and coated steel belts require no additional lubrication, eliminating the need for storage, cleanup and disposal of hazardous waste.

Efficiency Rating

Measurements taken on Gen2 installations with standard configurations have earned Otis the highest VDI4707 efficiency-class rating.



Based on a 1000 kg at 1.75 m/s elevator with 15 stops.



COMFORT

The art of motion

We want people to enjoy the ride – to find in the Gen2 elevator a moment of quiet calm during their otherwise busy day. That's why we engineered the Gen2 system to be different.

Smooth travel

We replaced conventional steel ropes with coated flat steel belts, eliminating the noise created by the metal-to-metal contact of conventional systems. The low-noise gearless machine, mounted on isolation rubber pads, also reduces vibration in the building and minimizes noise levels in adjacent rooms.





RELIABILITY

Manufactured exclusively at our ISO-certified factories, the Gen2 system is the result of our most advanced thinking, global experience and deep engineering expertise – all to ensure you get exceptional Otis performance, day after day. Gen2® Core is manufactured in our Bengaluru factory.

Pulse™

The Pulse system continuously monitors the elevator's coated steel belts to ensure their integrity, maintain safe, efficient operation and reduce inspection downtime.

Automatic rescue operation

The battery-powered Automatic Rescue Operation system delivers passengers safely to the nearest floor during a power failure.

Safety systems

The door is an elevator's most important safety feature. The Gen2 system uses a screen of infrared beams to reopen the doors immediately when an object breaks the invisible plane. The elevator's locking system blocks the doors from being opened from inside the cab if it stops between floors – another key safety feature.



We keep your world moving



Whether we installed it last week or last century, our name is on every product, so we make sure our service stands behind it.

An industry benchmark

Otis is committed to ensuring optimal equipment performance for the lifetime of the elevator. Our innovative technologies let Otis engineers precisely identify or anticipate possible issues. And when our skilled mechanics arrive at customer sites, they are committed to making repairs as quickly as possible.

The right maintenance at the right time

The Otis Maintenance Management System is a predictive and preventative system, designed to reduce the number of service calls – and downtime. Our mechanics are assigned specific elevator units, keeping response time to a minimum. We'll focus on your elevator so you can focus on your building.

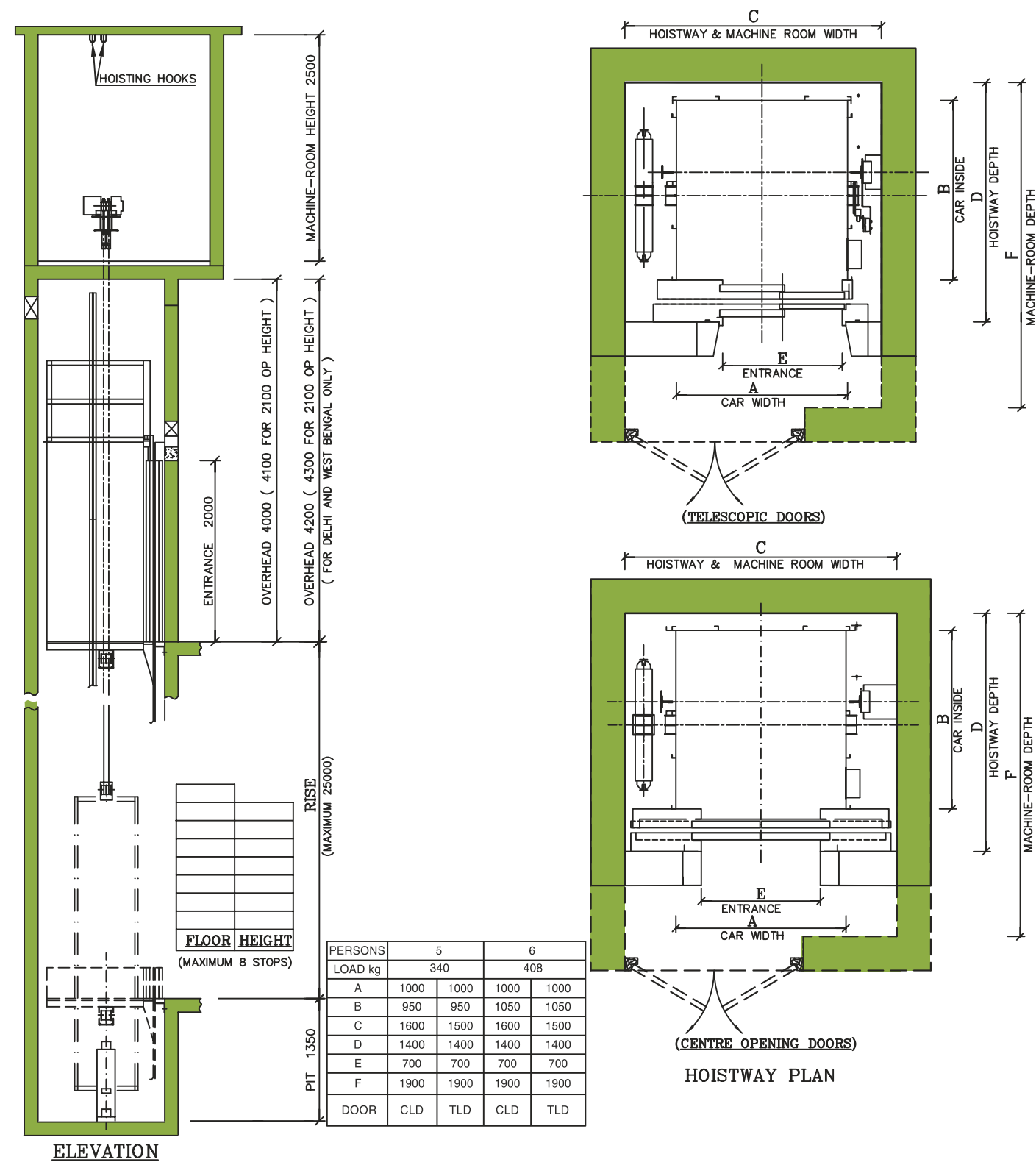
Otis genuine parts

Our service teams are supported by the worldwide Otis supply chain that stocks a comprehensive range of thoroughly tested genuine spare parts.

Customer support

Service comes first with OTISLINE® – our 24-hour call center. We pride ourselves on providing 24/7 dedicated customer support and prompt professional service.

PM GEARLESS: (MACHINE ROOM) Speed: 0.7mps

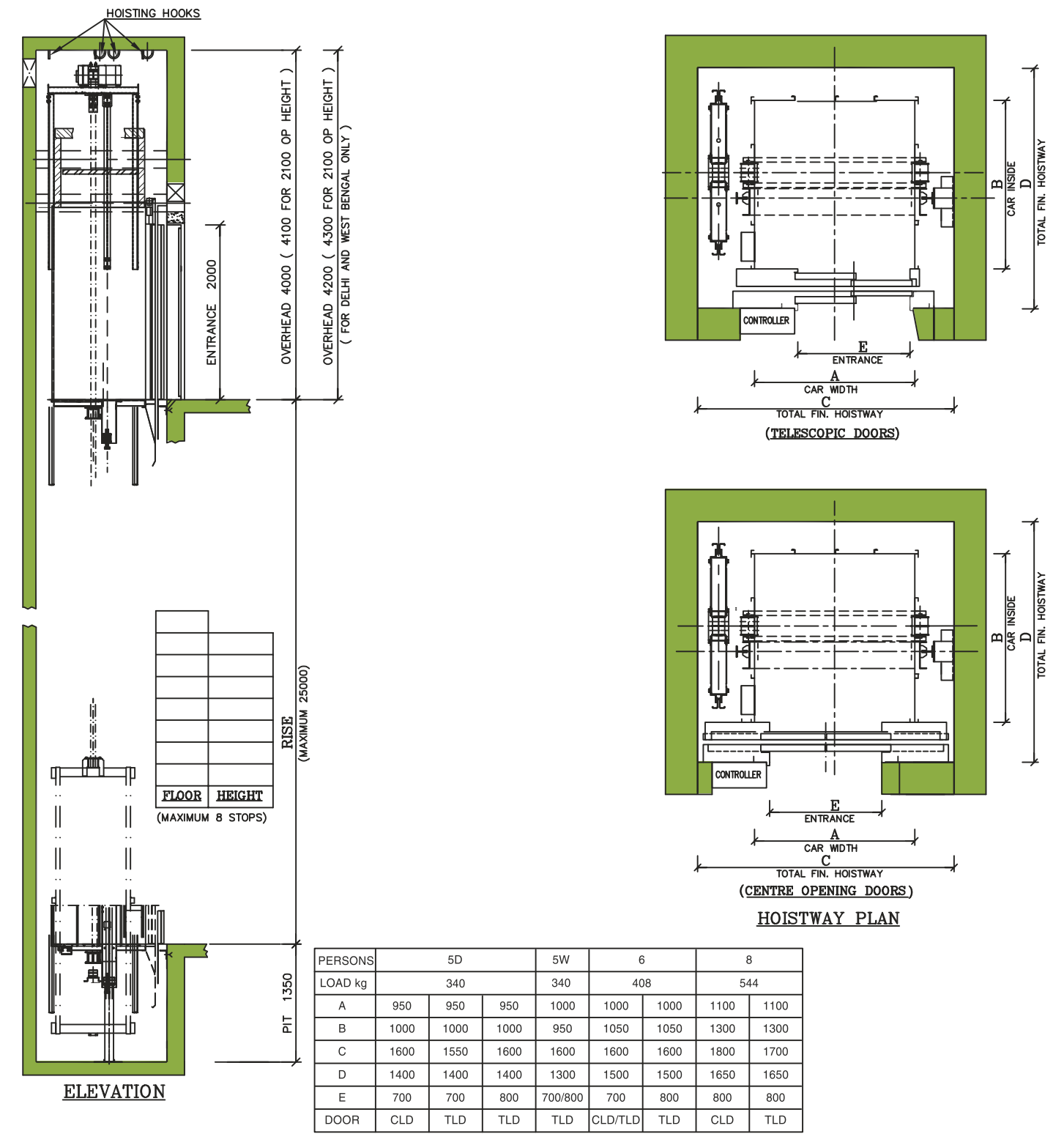


REFER TO OTIS DETAILED DRAWING FOR ADDITIONAL INFORMATION

Details of product design are subject to change.

TLD=TELESCOPIC DOORS
CLD=CENTRE OPENING DOORS
ALL DIMENSIONS ARE IN mm.

PM GEARLESS: (MACHINE-ROOMLESS) Speed: 0.7mps



REFER TO OTIS DETAILED DRAWING FOR ADDITIONAL INFORMATION

Details of product design are subject to change.

TLD=TELESCOPIC DOORS
CLD=CENTRE OPENING DOORS
ALL DIMENSIONS ARE IN mm.

Standard features

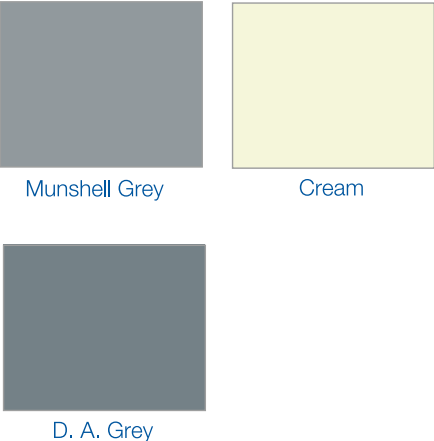
Parameter	Feature details	Parameter	Feature details
G1C	Simplex operation (single car)	GSW	Grounding switch
DDP	Delayed drive protection	ERO	Electrical recall operation
ALARB	Emergency alarm	ESB	Emergency stop switch
ANS-C	Anti-nuisance car call	FAN-1	Forced car ventilation with switch in car
ARD-1	Automatic return destination (home landing)	FAN-2	Forced car ventilation (automatic fan cut-off)
BID	Belt inspection device for coated steel belt	FCO	Full collective
CHT4	Separate car and hall call door times	HAD	Hoistway access detection
CDD	Car door detector (infrared)	HDI	Hall direction indicator (in hall button box)
CHCS	Cut-off hall call switch	HPI	Monochrome LCD hall positioning indicator (all floors)
CPI	Monochrome LCD position indicator in car	GTC	Governor tension switch
CTTL	Car tell-tale lights	ISC	Independent service (start with constant pressure on car button)
DCB	Door close button	LED	Car light (automatic on/off)
DOB	Door open button	LNS-C	Load non-stop device (in car)
DTP	Door time protection	LW	Load weighing device
DXT	Extra door time (lobby and parking)	MRO	Manual rescue operation from machine room
DZI	Door zone indicator	NGD	Door nudging
ECU	Emergency car light unit	OCB	Over current circuit breaker
		OLD	Overload device

Optional features

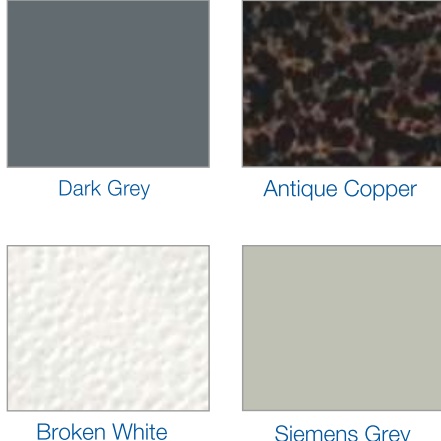
Parameter	Feature details	Parameter	Feature details
ARO	Automatic rescue operation (MR)	EPO	Emergency power operation
CCM	Chime in car	GC2 & 3	Duplex and triplex car group operation
BSM	Basement service	ICU	Intercommunication car-lobby-machine room
DCO	Down collective operation	PKS	Parking key switch
EFO	Emergency firefighter operation	SSM	Speech synthesis module
CRO	Provision for car reader access	SAO	Security access
BIO	Provision for Biometric access	ATT	Attendant operation
CPI	Color LCD display position indicator in car		



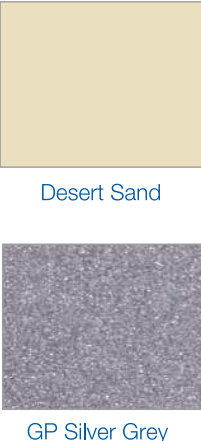
Standard Base Colours



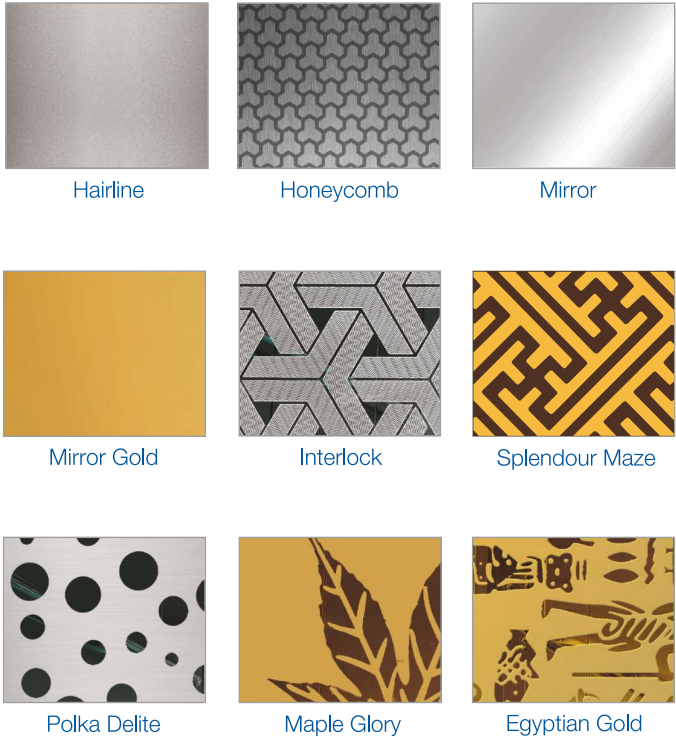
Advanced Textured Colours



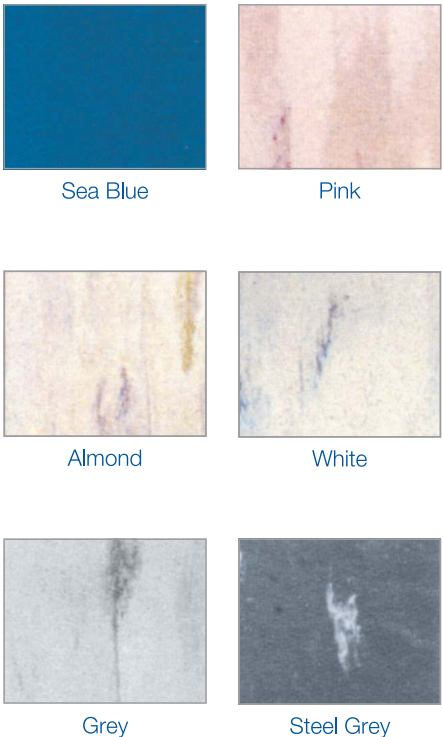
Classic Colours



Metal finishes



Flooring (vinyl)



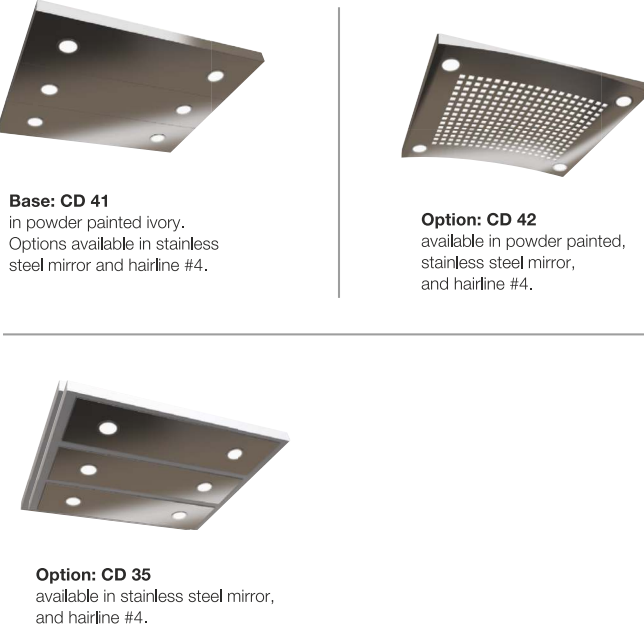
Car operating panel



Car position indicator



Ceilings



Hall operating panel



Handrails



ATMOS and AURA special aesthetics finishes also available in Gen2 Core MRL
Colours and finishes shown are indicative. Please allow for minor variations.

Fixtures shown are representative. Actual design may vary according to elevator cab size.