

GEN2® STREAM

Designed for a world in motion

OTIS



Set your building apart

Whether helping busy commuters get to work or delighting people as they shop, your building should be a unique experience for anyone who steps inside. The Gen2® elevator system has the style, comfort and speed needed to ensure passengers experience your building to the fullest. With space-saving architectural features that maximise design freedom, Otis helps your building stand out.

OTIS GEN2®STREAM OVERVIEW

Configuration	MRL	
	Speed	1.00 mps
Maximum rise	45 m	96 m
Maximum stops	16	32
Duty load	1088 kgs	1088 kgs
	1768 kgs	1632 kgs

Your elevator, your way

When designing a building, space is at a premium. Gen2® technology is uniquely designed to be small enough to fit inside the hoistway – eliminating the need for a machine room. So whether you want to impress visitors with an expansive, seamless lobby or offer tenants a larger space, Gen2® gives you the space to be architecturally creative.

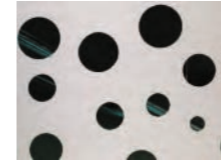
- + COMPACT DESIGN**
Gen2® technology eliminates machine room space and cost for greater architectural design freedom.
- + COMPACT CONTROLLER**
Sized to fit inside the wall of the top elevator landing, the controller can be accessed by a concealed test panel.
- + MAXIMISED SPACE SAVINGS**
Flexible coated steel belts allow a smaller machine sheave, reducing machine size by 80 percent.



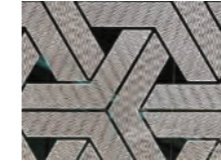
A variety of design possibilities

An elevator is an extension of your lobby and the lobby is a reflection of your building's style identity. Choose from a variety of looks for your elevator, to compliment your design creativity. Select from classic materials or contemporary designs to create an inviting experience for your building.

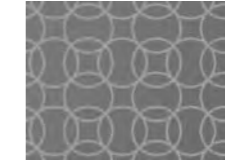
SS Etched finish



Polka Delite



Interlock



Aura Black Mirror



Aura Bronze Mirror

SS Gold finish



Mirror Gold

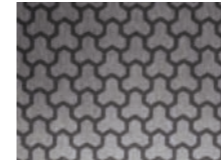


Splendor Maze



Champagne Gold Mirror

SS Vandal proof



Honeycomb



Dot matrix

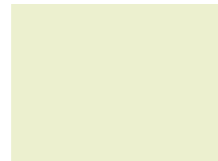


Linen SS

PC Base



Munshell Grey



Cream



D.A. Grey

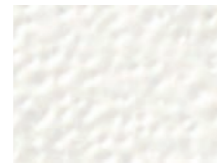
PC textured



Dark Grey



Artique copper



Broken white



Siemens grey

PC classic



Dessert Sand



GP Sliver grey

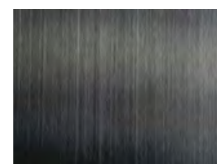
SS Base



Hairline SS



Mirror SS



Hairline black SS



Black mirror

Modular cabs

Antique Copper



Stainless Steel Mirror



Seamless intelligence

Gen2® connects your passengers with your building and with the world. From advanced onboard displays that you can personalise with information to smartphone apps that let passengers call an elevator from their phone, Otis helps you create a seamless experience.

MULTIMEDIA DISPLAY

The in-car display offers a rich multimedia screen that allows facility managers and tenants to customize messages in video and pictures formats. Additionally in case of an emergency, it also flashes emergency messages and prompts



ECALL™

Summon an elevator from anywhere in the building – apartment, office or even on the move – with the eCall™ smartphone app.

ONECALL

This destination keypad reduces hall and floor calls to the push of a single button. OneCall also provides accessibility functions such as extended door times and floor announcement.

Note: eView & eCall™ availability varies by country. Please contact your sales representative for more information.



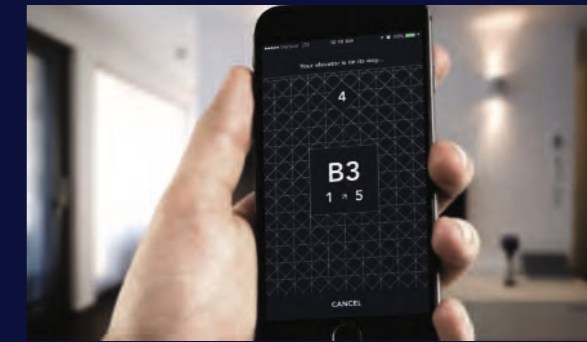
A smarter way to move throughout your day

Even short moments of waiting can feel like a lifetime. Otis reimagined how to navigate seamlessly through your building. With COMPASSPLUS® destination dispatch, we put personalised technology at your passengers' fingertips. COMPASSPLUS® creates an upscale, concierge-like experience that keeps everyone on the move.

- + IMPROVED TRAFFIC**
SmartGrouping organises people to get them to their destinations up to 50 percent faster than conventional dispatching, while making minimal stops. This system adjusts dynamically based on your building's needs throughout the day.
- + INTUITIVE DESIGN**
Our CompassCreate™ software provides an array of eye-catching screen options that intuitively navigate people throughout the building.



SMARTPHONE ACCESS



Call your elevator even before you get to the elevator bank with the eCall™ smartphone app.

SECURITY



eCall™ can be integrated with any third-party building security system and accommodates both external and built-in security ID readers.

Your comfort is our focus

We sharpened our focus on speed and performance without compromising comfort. We reduced metal-on-metal contact and dampened vibrations to ensure the Gen2® ride is smooth and quiet.

- + SWIFT MOVEMENT**
High-performance door operators and superior car acceleration/deceleration allow passengers to enter and exit elevators more quickly.
- + SMOOTH COATED STEEL BELTS**
The steel belts eliminate the noise created by the metal-on-metal contact from conventional steel ropes.
- + LOW-NOISE GEARLESS MACHINE**
Mounted on isolation rubber pads, the low-noise gearless machine reduces vibration and minimises noise in adjacent rooms.



Reliable, as expected

Some of the world's most distinguished buildings trust in Gen2® technology. Manufactured exclusively at our ISO-certified factories, the Gen2® system is the result of our most advanced thinking, global experience and deep engineering expertise. All so you can be sure of getting exceptional Otis performance day after day.

- + PULSE™**
The Pulse System continuously monitors the elevator's coated steel belts to safeguard their integrity, ensuring safe, efficient operation and reduced inspection downtime.
- + AUTOMATIC RESCUE OPERATION**
Battery-powered systems deliver passengers safely to the nearest floor during a power failure.

+ GOVERNOR TRIPPING TEST
25%
MORE

*Exceed application code

+ BUFFER STRIKE TESTS
16x
MORE

*Exceed application code

+ SAFETY GEAR TESTS
6x

'MADE IN OTIS'



At Otis, quality, safety and reliability are the hallmarks of exceptional design. Manufactured exclusively at our ISO-certified Bengaluru factory to Otis' exacting standards, the Gen2® Stream takes safety and reliability to new heights. It also underscores our commitment to the 'Make in India' initiative.



Create a lasting experience

Whatever your sustainability goals – from designing net-zero buildings to managing your energy efficiency – Gen2® is engineered to meet your needs.

+ REGEN™ DRIVE

75%

more efficient than conventional geared systems with non-regenerative drives, while providing clean power to help run other building systems.

+ LED LIGHTING

10x

longer lifespan of Gen2® LED lighting compared to conventional fluorescent lamps.

+ LUBRICATION

ZERO

coated steel belt and machine lubrication needed, providing for a cleaner hoistway and elevator environment.

+ LOW-VOLTAGE ARCHITECTURE

50%

less energy consumed when employing standby mode – which also helps protect mechanics during maintenance.

+ SLEEP MODE

75%

more efficient LED energy usage with sleep mode – lights and fans shut down when not in use and are automatically restarted with the touch of a button.

We're with you from concept to completion

Creating a unique experience for tenants and customers takes a lot of thought, planning and coordination. Thankfully, you don't have to do it alone. For over 160 years, we've helped customers all around the world reach new heights while helping billions of passengers arrive at their destinations every day. So from detailed project planning to ongoing service, we're here to help you every step of the way.



PROJECT DESIGN

We consider architectural solutions, traffic analysis, product specifications and value engineering to help craft and deliver on your vision.



SPECIALISED INSTALLATION PLANNING

Our team helps at every step of the installation process, from coordinating contractors to monitoring specialised safety reviews to delivering a smooth handover when the project is complete.

A commitment to exceptional service

We know what it takes to keep people moving safely and smoothly. Our founders were dedicated to delivering extraordinary service, and today we're continuing that promise with personalised and imaginative ways to meet our customers' every need.

Benefit from the industry's leading service offering, featuring 24/7 dedicated customer support through OTISLINE®.



WE EARN YOUR TRUST — EVERY DAY

Our mechanics see your building as their own. With a global team of more than 30,000, we work around the clock to keep your equipment operating like new. The result is truly personalised service that ensures we build your trust over the lifetime of your equipment.



TURNING DATA INTO ACTION

As one of the first elevator companies to use big data and predictive analytics to improve performance, we're experts at getting the most out of emerging technology. Our digital ecosystem uses the "internet of things" and mobility tools to predict and diagnose issues before they occur. All this to stay ahead of your needs and to deliver a personalised passenger experience.



Standard equipment

TRACTION



- Gearless machine with synchronous permanent magnet motor
- Radial low inertia design
- 180 starts/hour in peak abilities

MONITORING



- Automated rescue operation
- Pulse 24/7 belt integrity monitoring system

REGEN DRIVE



- Upto 75% Energy Saving
- Power Regeneration

CONTROL & POWER



- Modular microprocessor system
- Closed loop, variable frequency and voltage
- Regenerative drive with +/- 3 mm stopping accuracy
- Standby mode
- 5 LED lightning in car

SUSPENSION



- Stainless steel polyurethane-coated belts instead of conventional ropes
- Lubrication free
- Life duration twice as long as conventional ropes

DOORS



- Variable speed high-traffic door operator
- 2 hr. fire resistance door
- Reinforced self-cleaning slotted sill
- Car door lock compatible

Main options

DESTINATION DISPATCH



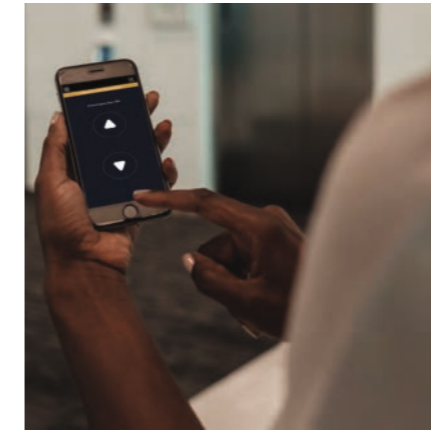
- Intelligent passenger-and-destination smart grouping
- Fuzzy logic
- Security systems integration

OTISONE



- Elevator connectedness through IOT & Cloud technology
- Monitors elevator real time status and performance
- Improved diagnostics and predictive maintenance.
- Call back reduction

OTIS ECALL™



- eCall™ smartphone app
- Bluetooth enabled
- QR code assisted

PREMIUM RIDE QUALITY



- Taller doors and cabs

MULTIMEDIA DISPLAY



- Supports on floor marking, running direction
- Supports date & time display
- Supports customized videos and pictures
- Elevator emergency assistance

FULL CUSTOMISATION



- Variable dimensions
- Special car & door finishes
- High-constraint environment
- Our team stays at your disposal to make your project possible

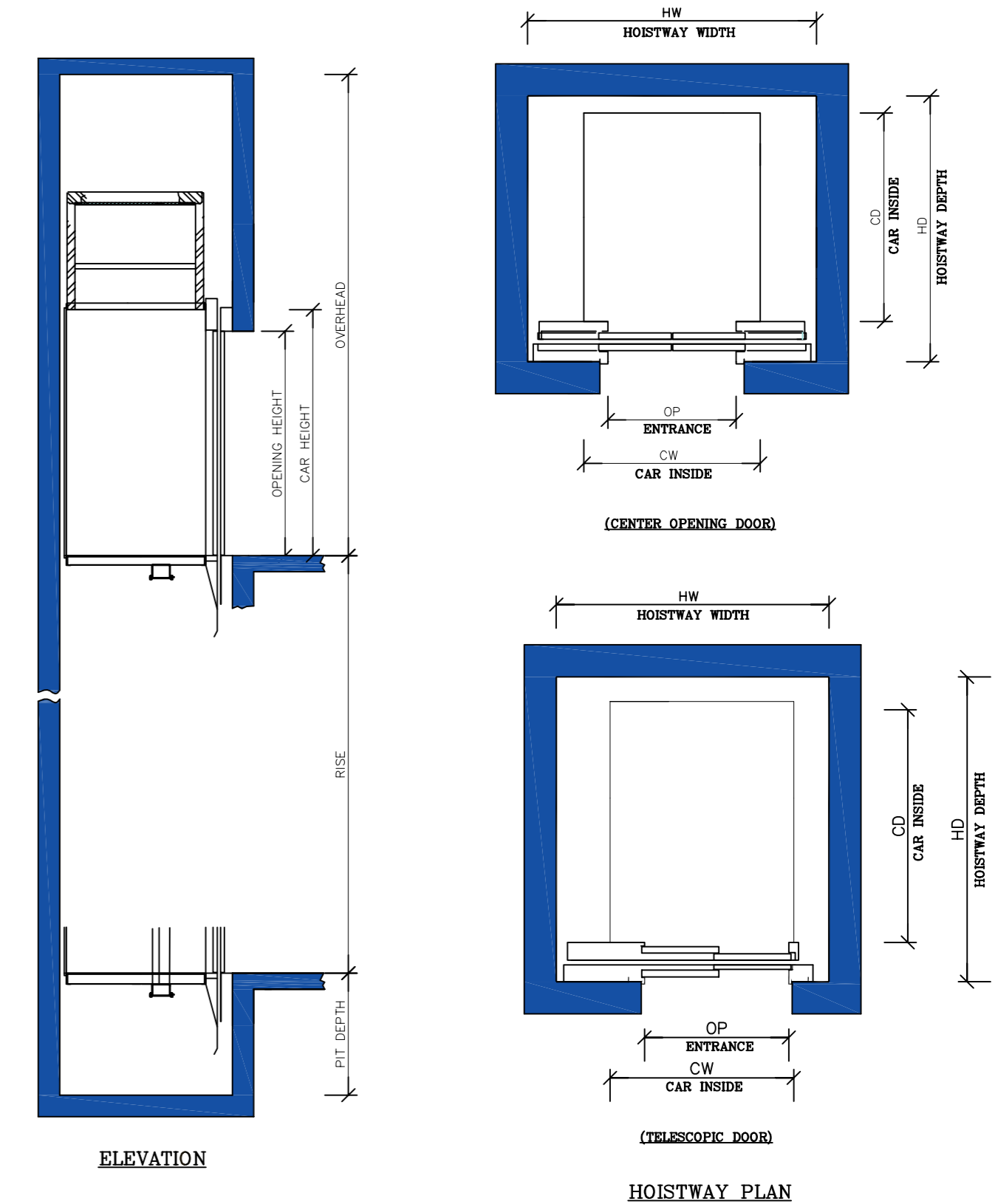
Gen2[®] specifications

Gen2[®] specifications

Car Type	16W1	17W1	17D1	20W1	
No. of Passengers	16	17	17	20	
Duty Load (kg)	1088	1156	1156	1360	
Speed (V) (Mps)	1.00 / 1.75 mps				
Max Rise (m)	1 mps: 45 m & 1.75 mps: 96 m				
Max Stops	1 mps: 16 Stops & 1.75 mps: 32 Stops				
Car Width (CW) (mm)	1800	1800	1200	2000	
Car Depth (CD) (mm)	1450	1500	2200	1550	
Car Height (CH) (mm)	2400 / 2700				
Opening Width (OP) (mm)	1000	1000	1000	1100	
Door opening type	CLD	CLD	TLD	CLD	
Opening Height (OPH) (mm)	2100 / 2400				
No of Entrances	1				
Aesthetics	CD41 / JO21 / JO22				
Deco Weight (kg)	300	300	300	0	500
Hoistway Width (HW) (mm)	2550	2550	1950	2750	
Hoistway Depth (HD) (mm)	1850	1900	2650	1950	
Top of car balustrade (mm)	1100				
Overhead (mm)	1.00 mps = CH+1700 / 1.75 mps = CH +2000				
Pit depth (mm)	1.00 mps = 1350 / 1.75 mps = 1600				
Operation Control	FCL / DCL				
Car Grouping	Max 8 Car group				

20W2	20D1	24W1	24D1	26D1		
20	20	24	24	26		
1360	1360	1632	1632	1768		
1.00 / 1.75 mps						
1 mps: 45 m & 1.75 mps: 96 m						
1 mps: 16 Stops & 1.75 mps: 32 Stops						
1800	1300	2000	1500	1600		
1700	2400	1800	2400	2400		
2400 / 2700						
1000	1100	1100	1200	1200		
CLD	TLD	CLD	TLD	TLD		
2100 / 2400						
1						
CD41 / JO21 / JO22						
0	500	0	500	500	500	250
2550	2100	2750	2250	2350		
2100	2850	2200	2850	2850		
1100						
1.00 mps = CH+1700 / 1.75 mps = CH +2000						
1.00 mps = 1350 / 1.75 mps = 1600						
FCL / DCL						
Max 8 Car group						

Gearless: (With Machine Room-less) Speed= 1 mps & 1.75 mps



REFER OTIS DETAILED DRAWING FOR ADDITIONAL INFORMATION

ALL DIMENSIONS ARE IN mm



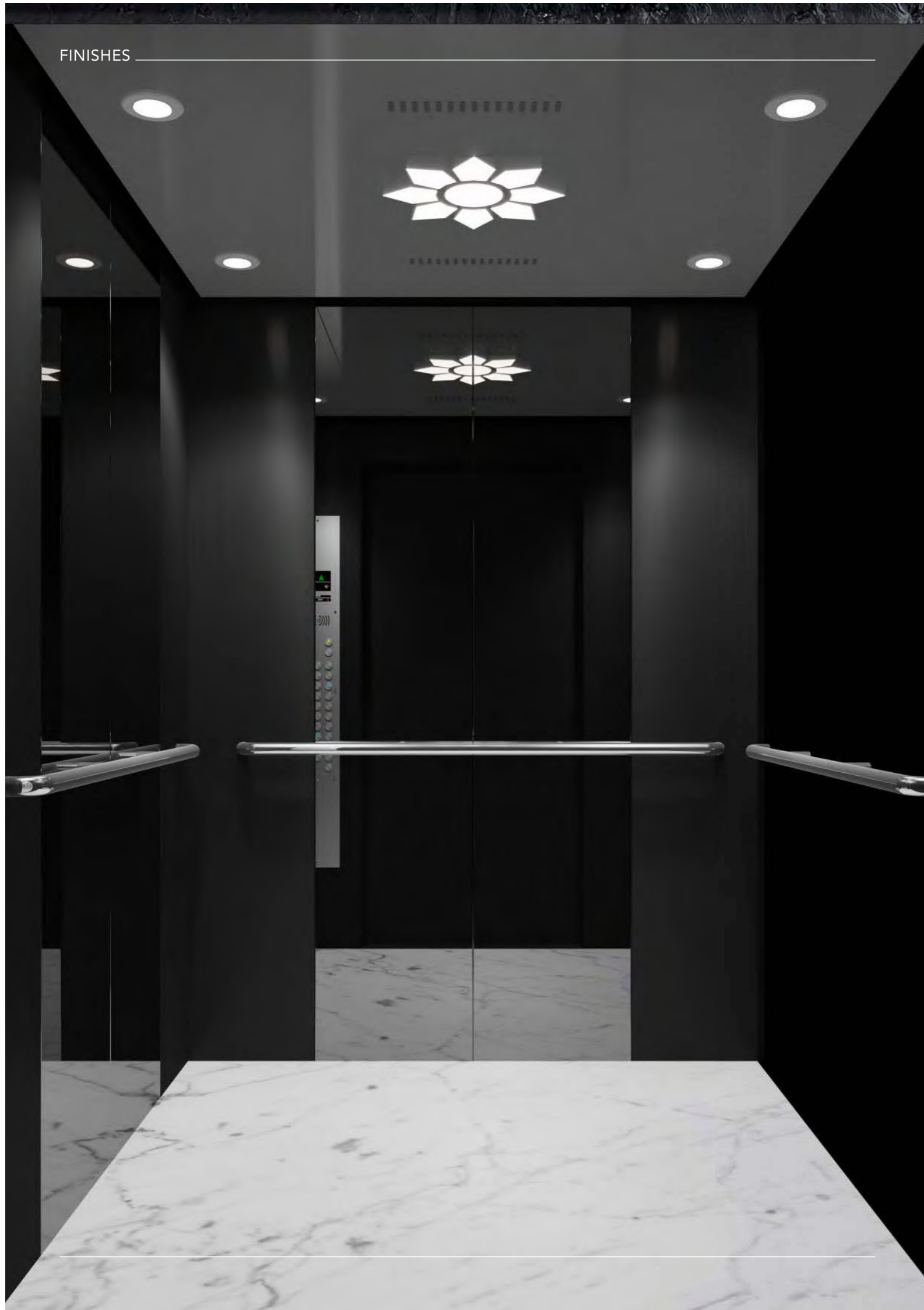
BROKEN WHITE + ANTIQUE COPPER





STAINLESS STEEL + STAINLESS STEEL MIRROR



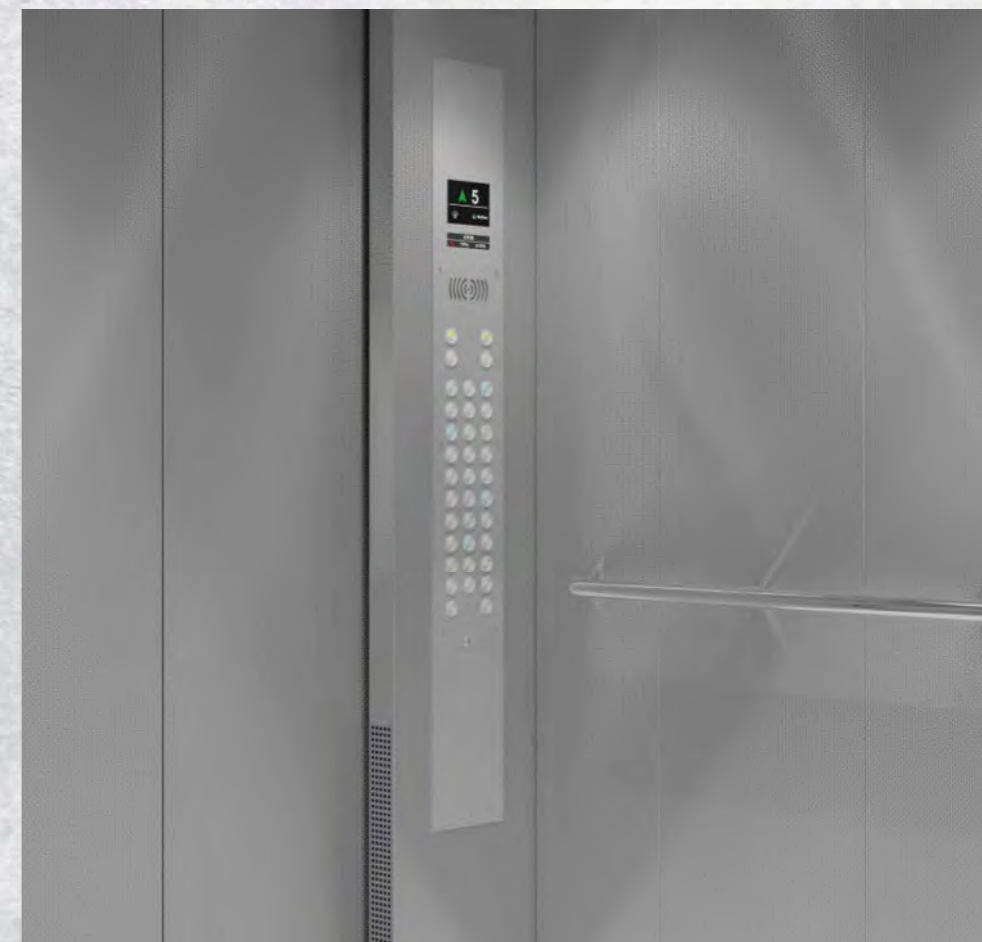


STAINLESS STEEL BLACK + STAINLESS STEEL BLACK MIRROR





STAINLESS STEEL LINEN



FINISHES



STAINLESS STEEL + WARM WOOD



FINISHES



STAINLESS STEEL WARM



FINISHES



STAINLESS STEEL + DEEP BRONZE



FINISHES



STAINLESS STEEL + CHAMPAGNE GOLD



FINISHES

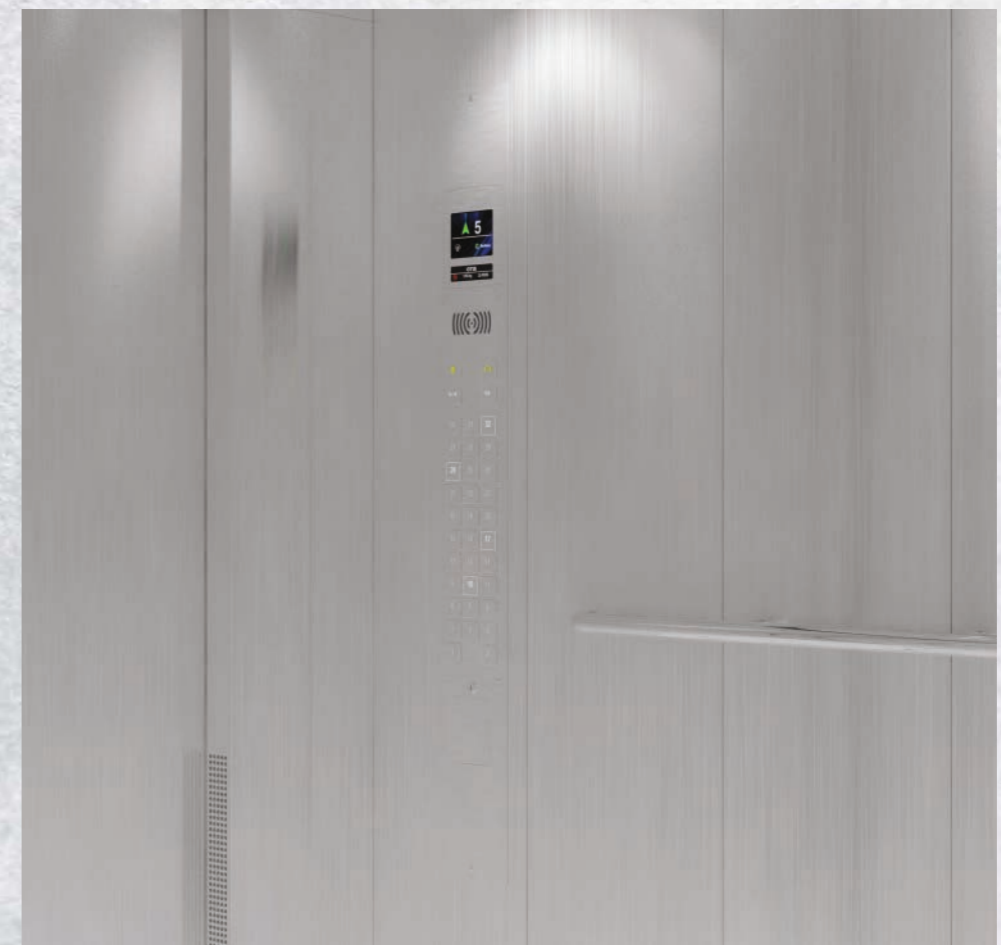


STAINLESS STEEL + STAINLESS STEEL BLACK MIRROR





STAINLESS STEEL COOL



Built on a legacy of innovation, Otis was founded in 1853 after Elisha Otis invented the elevator safety brake, giving rise to the modern city, transforming how people live and work, and revolutionizing architecture itself. Today, we are the world's leading company for elevator and escalator manufacturing, installation and service. We move 2 billion people a day and maintain more than 2 million customer units worldwide, the industry's largest maintenance portfolio. We can be found in many of the world's most recognizable buildings, as well as the busiest transportation hubs and retail centers – we are everywhere people are on the move. Headquartered in Connecticut, USA, Otis is 69,000 people strong, including 40,000 field professionals, all committed to meeting the diverse needs of our customers and passengers in more than 200 countries and territories worldwide. To learn more, visit www.otis.com and follow us on LinkedIn, Instagram, Facebook and Twitter @OtisElevatorCo.

OFFICES:

Head Office & Western Region
(Mumbai Operations):
Otis Elevator Company (India) Ltd.,
9th Floor, Magnus Tower,
MindSpace, Link Road,
Malad (West), Mumbai - 400 064.
Tel.: 022 - 2844 9700 / 6679 5151,

Eastern Region:
Victoria Park, Block : GN, Level - 2
Plot No. 37/2, Sector V,
Salt Lake City,
Kolkata - 700091
Tel: (91-33) 4052 4300

Northern Region:
271 & 272, Aggarwal Cyber Plaza-II,
C-7, Netaji Subash Place,
Pitampura, New Delhi - 110034.
Tel.: 011 - 46069000 / 46069211 /
46069100

Southern Region:
Otis House, MK Towers,
27, Langford Road, Shanti Nagar,
Bangalore - 560025.
Tel.: 080 - 22111190, 40314500

Western Region - Area Operations:
1st Floor, Amar Synergy Building,
Next to Vijay Sales & Sadhu Vaswani
Chowk, Near Pune Railway Station,
Pune - 411001.
Tel.: 020 - 67045100

MANUFACTURING:

Bengaluru:
No.92, Kiadb Industrial Estate,
Phase II, Jigani Industrial Area,
Anekal Taluk, Bangalore - 560105.
Tel.: 080 - 782 5401 / 5402 / 5403

SERVICE CENTRES:

Western Region:
Mumbai, Navi Mumbai,
Thane, Nashik.

Eastern Region:
Agartala, Angul, Bhubaneswar,
Bokaro, Dhanbad, Durgapur,
Guwahati, Jamshedpur,
Jhadsuguda, Kahalagaon, Kolkata,
Patna, Ranchi, Shillong, Siliguri.

Northern Region:
Agra, Aligarh, Allahabad, Amritsar,
Bareilly, Chandigarh, Dehradun,
Ghaziabad, Gurgaon, Gwalior,
Haridwar, Jalandhar, Jaipur, Jodhpur,
Jammu, Kanpur, Kota, Ludhiana,
Lucknow, Meerut, Moradabad,
New Delhi, Noida, Rohtak, Shimla,
Shaktinagar, Sonebhadra, Srinagar,
Udaipur, Varanasi.

Southern Region:
Bengaluru, Calicut, Chennai,
Coimbatore, Ernakulam, Erode,
Hubli, Hyderabad, Kaiga, Kottayam,
Madurai, Mangalore, Mysore,
Ootakamund, Pondicherry,
Quilon, Ramagundam, Salem,
Thiruvananthapuram, Thirunelveli,
Trichy, Trichur, Vellore, Vijaywada,
Vishakapatnam.

Western Region - Area Operations:
Ahmedabad, Ankleshwar,
Aurangabad, Bhopal, Goa, Indore,
Jabalpur, Kolhapur, Korba, Nagpur,
Pune, Rajkot, Raipur, Solapur, Surat,
Vadodara, Valsad.