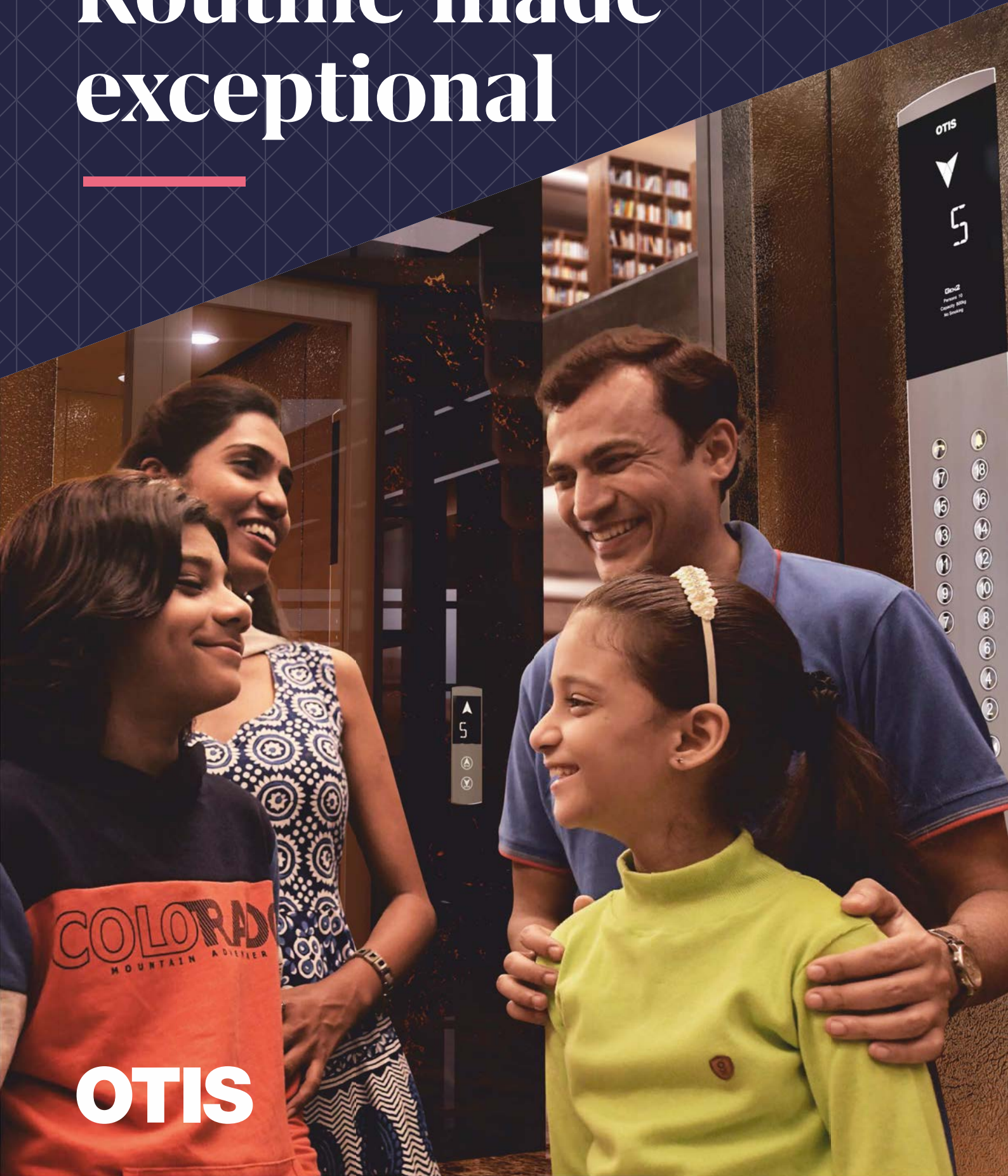


NOVA

Available in Gen2 & Gen3 range

Routine made exceptional



OTIS

Gen2- Powerful Technology in a compact design

The Gen2 delivers superior performance in a space-saving design, Coated steel belts have a significantly smaller bending radius than wire rope. This engineering breakthrough paved the way for other innovations: our ultra-compact permanent magnet gearless machine is 80 percent smaller and more efficient than conventional geared machines. The steel belts also last twice as long as conventional steel ropes, without the need for any lubrication.



20%
lighter than ropes

PURE STRENGTH

Lightweight belts eliminate the need for lubricants and hazardous waste disposal. Our Pulse™ system ensures belt integrity and eliminates inspection downtime.



50%
smaller machine

COMPACT BUT POWERFUL

The use of innovative flat belts has allowed us to engineer key components into a compact, integrated unit. The permanent magnet gearless machine is 50% smaller and more energy efficient than conventional geared ones.



Up to
75%
energy savings

POWER REGENERATION

Redirect excess energy into the building's electric grid using regenerative technology. Our ReGen™ drive delivers up to 75% energy savings and produces clean power that minimizes impact on the building's electrical system.



Compact machine-room configuration

The compact machine-room configuration reduces the space requirements for the Gen2 system to no larger than the hoistway footprint, reducing construction costs and optimizing rooftop space.



Machine-roomless configuration

The Gen2 machine-roomless elevator components are so compact, they fit inside the hoistway. This eliminates the need for an extra room on top of your building for elevator components. The result is a system that saves construction cost and frees up valuable floor space to support your design vision.

Pulse™

The Pulse system continuously monitors the elevator's coated steel belts to ensure their integrity, maintain safe, efficient operation and reduce inspection downtime.

Automatic rescue operation

The battery-powered Automatic Rescue Operation system delivers passengers safely to the nearest floor during a power failure

Safety systems

The door is an elevator's most important safety feature. The Nova uses a screen of infrared beams to reopen the doors immediately when an object breaks the invisible plane. The elevator's locking system blocks the doors from being opened from inside the cab if it stops between floors-another key safety feature.



Manufactured exclusively at our ISO-certified factories, the Nova is the result of our most advanced thinking, global experience and deep engineering expertise all to ensure you get exceptional Otis performance, day after day. Gen2 Nova is manufactured at our Bengaluru factory.

Gen3-Powered by OTIS ONE™

SERVICE THAT'S A STEP AHEAD

Gen3 with OTIS ONE IoT digital platform software-enabled service, you'll experience greater system transparency and predictability, enabling you to harness the power of advanced monitoring, big-data analytics and predictive maintenance to identify and address potential issues before they happen.

PROACTIVE COMMUNICATION

Real-time notifications

Ongoing status updates and 24/7 proactive monitoring ensures your equipment stays up and running - or we'll notify you as soon as an issue is detected.

Informed repairs

Service requests are closed sooner with automatic alerts that provide mechanics accurate fault information and the parts needed before they arrive at your building.

REASSURED PASSENGERS

Voice call for emergencies

Connects passengers with OTISLINE via voice call to provide greater peace of mind during an entrapment.

PREDICTIVE INSIGHTS

To ensure your business continuity, mechanic visits are planned based on predictive maintenance algorithms so that problems can be fixed before they cause a shutdown.

AN ELEVATOR WITH A HEARTBEAT

The Gen3 elevator monitors equipment health and performance in real time, 24/7. The information is collected and analyzed against more than 30 years of Otis foundational data to uncover new insights that help better predict and solve issues, and avoid unexpected downtime. That way, you don't have to worry about an unexpected shutdown.

REMOTE INTERVENTION

Where allowed

Remote reset

In case of minor issues, where codes allow, we can reset your equipment remotely within minutes.

Remote assistance

In case of passengers trapped in the car, we can release them promptly after safety conditions are checked.

Customized lift operations

Our remote experts can customize to match your needs: modify door opening speed, manage floor access and personalize voice announcements.



Faster, more informed repairs

We're empowering mechanics with automatic alerts, more data and new digital capabilities.

Powder coated-dual tone



AQUA



ARCTIC



BRICKSTONE

Powder coated-single tone



IVORY



PEARL



PEBBLE

Stainless Steel



REFLECTO REAR



SLATE REAR



MIRROR REAR

*Colours and finishes shown are indicative. Please allow for minor variations.

** Textured finish

Atmos

LIME GREEN



BLUE GREEN



TAME TEAL BLUE



Aura

BLACK



BRONZE



CHAMPAGNE GOLD



Ambiance cab design

Art in motion

Otis has a globally integrated design team, which has been screened by experts to provide users carefully selected Ambiance cab designs. You can choose your own style to create a space for your lifestyle.



Natural

Natural Ambiance designs and materials are warm and bright using printed designer steel. A sublime choice of materials blended to evoke serenity.



Modern

Modern Ambiance designs and materials are contemporary and vibrant using a combination of printed designer steel and shades of Stainless Steel Hairline.



MOONLIGHT
MAGIC-SILVER
FINISH



MAJESTIC
MAHOGANY-WOOD
FINISH



RADIANT
RUSSET-TEXTURED
BRONZE FINISH



RIVER OF THE
NIGHT-TEXTURED
BLACK FINISH



MOONLIGHT MAGIC



MAJESTIC MAHOGANY



RADIANT RUSSET



RIVER OF THE NIGHT

Ambiance designs are a promise of Art in Motion. We extend the rich and vibrant interiors of the elevator space to the elevator lobbies with these designs.

Modular Series



Nova & Life Range



Combinations



Fresh Designs



AXCENT

Special Panel on
Rear Center Panel

TRIFECTA

Special Panel
on Three Sides
Center Panel

FINESTRA

Special Panel on
Complete Rear
Panel

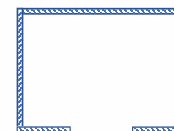
OMNIVERA

Special Panel on
all Panels

CLASSIC



omega

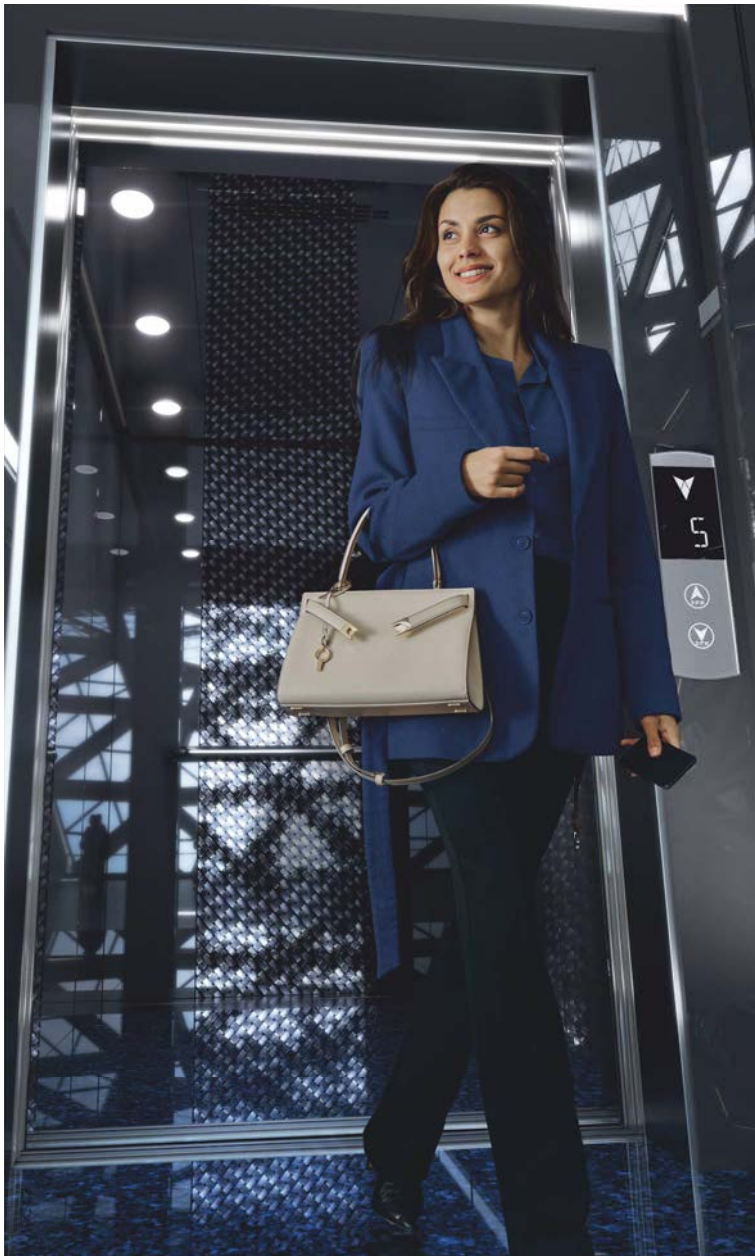


zeta



Base finish ———
SS Hairline/mirror ———
SS Etched finish ———

Base finish	SS Hairline	SS Mirror finish
Special Panel	5 choices in hairline colours/etched patterns	5 choices in mirror colours/etched patterns



**AXCENT-BRONZE TRIFECTA-CHAMPAGNE
GOLD**

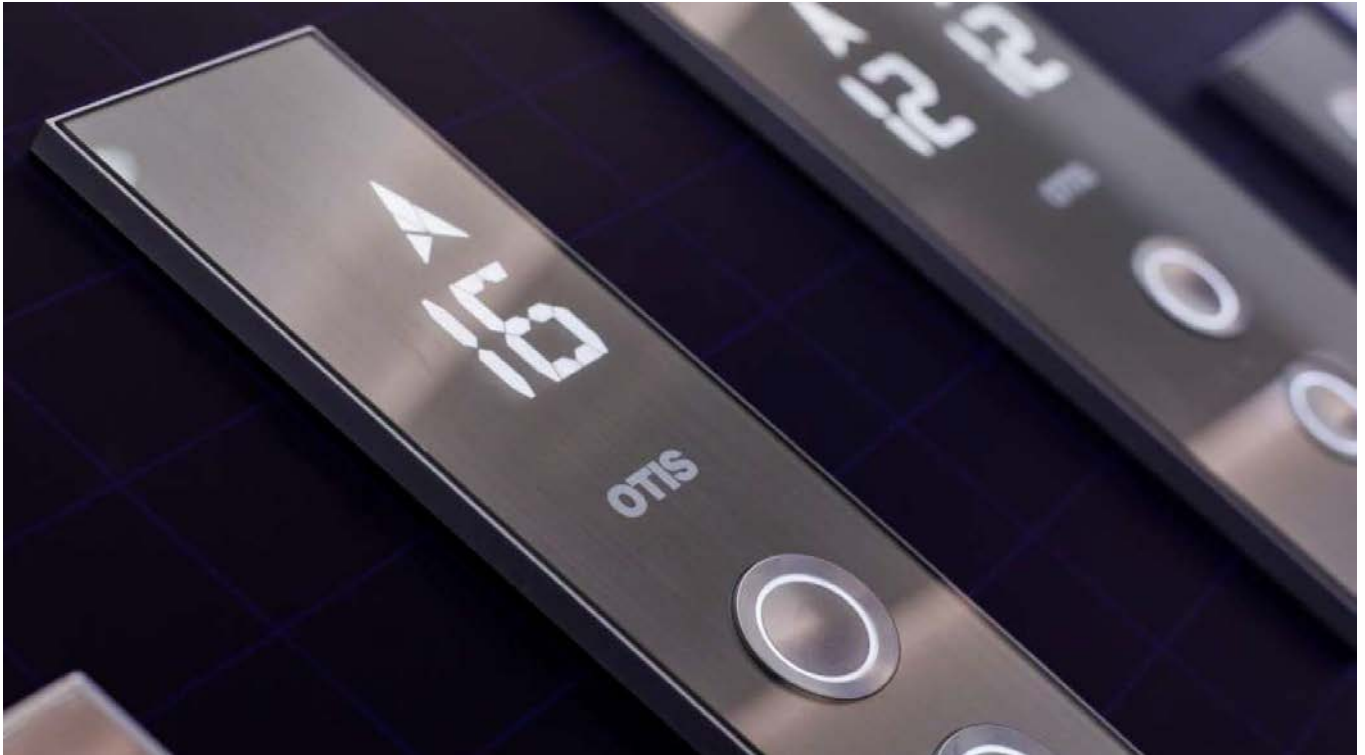


**FINESTRA-BLACK OMNIVERA- ROSE
GOLD**

A WIDE VARIETY OF OPTIONS

3 STYLES	4 EDITIONS	2 BASE FINISH	3 CEILINGS	5 COLOURS & SPECIAL FINISHES
CLASSIC	AXCENT	HAIRLINE	CD61	REGULAR WITH WOVEN
OMEGA	TRIFECTA	MIRROR	CD62	BRONZE WITH LEATHER
ZETA	FINESTRA		CD63	CHAMPAGNE WITH RHOMBUS
	OMNIVERA			ROSE GOLD WITH PAISLEY
				BLACK WITH ARRAY

OTIS Create- Personalize your project



EXPERIENCE A FULL SUITE OF PERSONALIZED DESIGN TOOLS AND RESOURCES

Whether you're an architect looking to configure models and make structural decisions, a developer navigating complex planning requirements or anyone in between, it's easier to explore new possibilities and make informed decisions based on the unique needs of your project.

YOUR PROJECT STAGE

Design →

YOUR PROJECT STAGE

OTIS CREATE

Simplify elevator system planning with recommended configurations, customized performance details and more - all in a few clicks.

OTIS WEB PLAN LITE

Explore our intuitive tool for planning and designing your own vertical transport solutions. Try out the Web plan Lite for various combinations and find the best fit for your project.

Car operating panel



Push button with braille

Modular Ceilings



CD 61



CD 62



CD 63

Modular Series - Fixtures HBP17 and COP21



Hall operating panel

Finish in hairline stainless steel with alphanumeric display.



Pan

Flat

Aura

Gen3 - Pure Hall Fixtures (Optional)



Round Handrail



Flat Handrail



Car position indicator



TFT-LCD Display
(Base)



TFT-LCD Display
(Option)



LCD Display
(Color LCD - Option)

Car Display



Black & White LCD
For Ambiance range

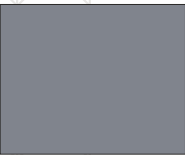


Multimedia LCD

Aesthetics & Fixtures

Standard

Base Colours



Munshell Grey



Cream



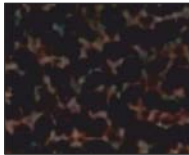
D. A. Grey

Advanced

Textured Colours



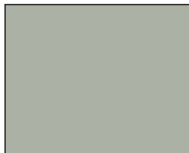
Dark Grey



Antique Copper

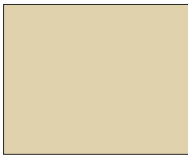


Broken White

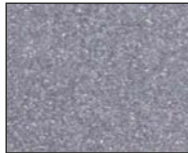


Siemens Grey

Classic Colours

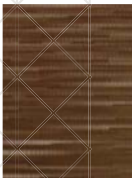


Desert Sand



GP Silver Grey

Natural Printed Finishes



Radiant Russet



River of the night



Moonlight Magic



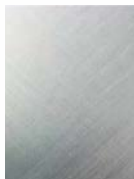
Majestic Mahogany



Printed Bronze



Charcoal Grey



Silver Cross hairline



Beige

Modern Stainless Steel Finishes



Stainless Steel
Bronze hairline



Stainless Steel
black hairline

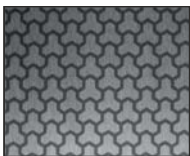


Stainless Steel
hairline

Metal finishes



Hairline



Honeycomb



Mirror Gold



Interlock



Mirror

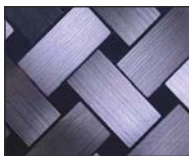


Splendour Maze

Modular Finishes



Bronze Leather



SS Woven



Rhombus



Paisley



Array

Flooring (vinyl)



Sea Blue



Pink



Almond



White



Grey



Steel Grey

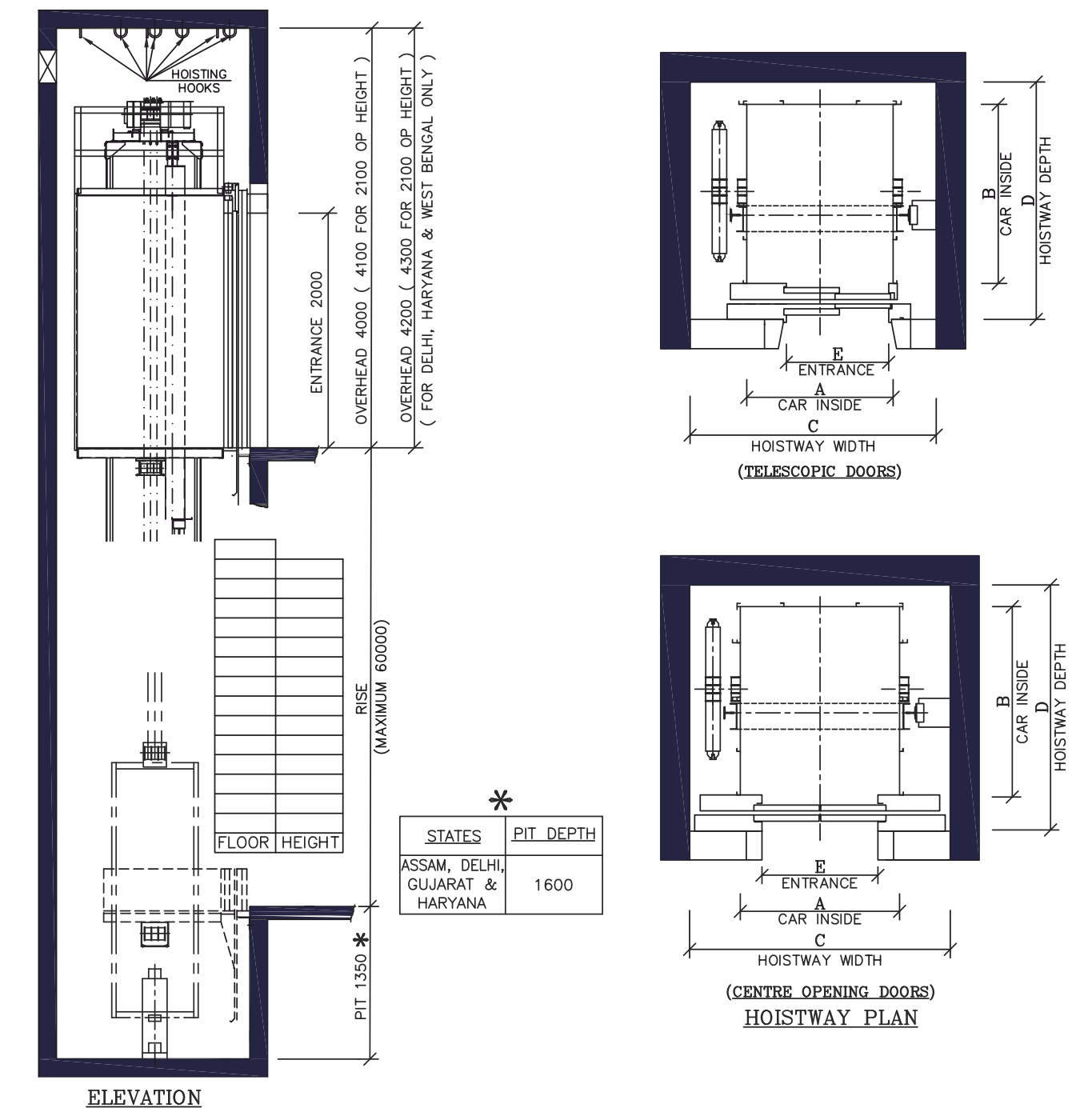
AMBIANCE, ATMOS and AURA special aesthetics finishes also available in Gen2 Nova MRL Colours and finishes shown are indicative. Please allow for minor variations.

Technical specifications

MODEL	MR	MRL
Passenger	5, 6, 8, 10, 13, 15	5, 6, 8, 9*, 10, 13, 15, 16
Duty - Kgs	340, 408, 544, 680, 884, 1020	340, 408, 544, 612*, 680, 884, 1020, 1088
Speed	1.00 MPS	1.00 MPS
Controller Type	Micro-controller based	Micro-controller based
Drive	VF Renegerative (Closed Loop)	VF Renegerative (Closed Loop)
Power Supply	400/415 Volts (3 Phase AC)	400/415 Volts (3 Phase AC)
Operation	Full Collective	Full Collective
Car Group	Simplex / Duplex / Triplex	Simplex / Duplex / Triplex
Machine	PM Gearless	PM Gearless
Ropes Type	Flat coated Steel Belt	Flat coated Steel Belt
Max. Stop	21(Same side opening)	21(Same side opening)
Max. Rise	60 Metres	60 Metres
Car Finish	Powder painted / Stainless steel / Metal effects	Powder painted / Stainless steel / Metal effects
Ventilation	Cross Flow fan	Cross Flow fan
False Ceiling	As per available designs	As per available designs
Entrance Height	2000 mm (2100 mm option)	2000 mm (2100 mm option)
Car Height	2200 mm (2300 mm option)	2200 mm (2300 mm option)
Hand Rails	5 & 6 Passenger only at rear: Base - Painted: Option - SS2200 mm (2300 mm option) 8, 9, 10, 13, 15 Passenger Base config - rear: Base - Painted: Option - SS 3 side option Base - Painted: Option - SS	5 & 6 Passenger only at rear: Base - Painted: Option - SS2200 mm (2300 mm option) 8, 9, 10, 13, 15, 16 Passenger Base config - rear: Base - Painted: Option - SS 3 side option Base - Painted: Option - SS
Flooring	Vinyl as standard / Option provided for Recess in flooring (Marble, Granite and Granamite)	Vinyl as standard / Option provided for Recess in flooring (Marble, Granite and Granamite)
Fire Rated	As applicable per Code (Fire rating of 60 mins & 120 mins)	As applicable per Code (Fire rating of 60 mins & 120 mins)
Door Operator	DC Door operator	DC Door operator
COP Type	Box Type - SS finish	Box Type - SS finish
COP Buttons	Round Illuminated Button (Blue Colour)	Round Illuminated Button (Blue Colour)
Car Position Indicator	Monochrome LCD	Monochrome LCD
Auto Fan Cut Off	Standard	Standard
Hall Fixtures	HB with PI (Monochrome LCD)	HB with PI (Monochrome LCD)
Hall Fixture Face Plates	Base: Pan type is SS #4 finish, Option: flat type in SS finish	Base: Pan type is SS #4 finish, Option: flat type in SS finish

Technical specifications

PM GEARLESS: (MACHINE ROOMLESS) SPEED: 1.00mps



PERSONS	5 (D)			5 (W)		6		8 (D)		8 (W)		9	10		13 (D)		13 (W)		15 (D)			15 (W)		16 (W)		16 (D)	
LOAD Kgs	340			340		408		544		544		612	680		884		884		1020			1020		1088		1088	
A	950	950	950	1000	1000	1000	1000	1100	1100	1250	1200	1100	1100	1100	1100	1600	1000	1000	1000	1000	1600	1000	1600	1000	1300		
B	1000	1000	1000	950	1100	1100	1100	1300	1300	1150	1300	1600	1600	1600	1600	2000	2000	1350	2400	2400	2400	1500	1600	1600	2000		
C	1550	1600	1600	1600	1600	1600	1600	1850	1700	1850	1800	1850	1750	1850	1750	2300	1700	1850	2000	2300	2250	2050					
D	1400	1400	1400	1300	1450	1450	1650	1650	1550	1650	1950	1950	2350	2350	2350	1700	2750	2750	2750	1850	1950	2350					
E	700	700	800	700/800	700	800	800	800	800	800	800	800	800	800	800/900	900	900	800	900	900	900	900	900				
DOOR	TLD	CLD	TLD	TLD	CLD/TLD	TLD	CLD	TLD	CLD	CLD	CLD	TLD	CLD	TLD	CLD	TLD	CLD	TLD	CLD	CLD	CLD	CLD	CLD				

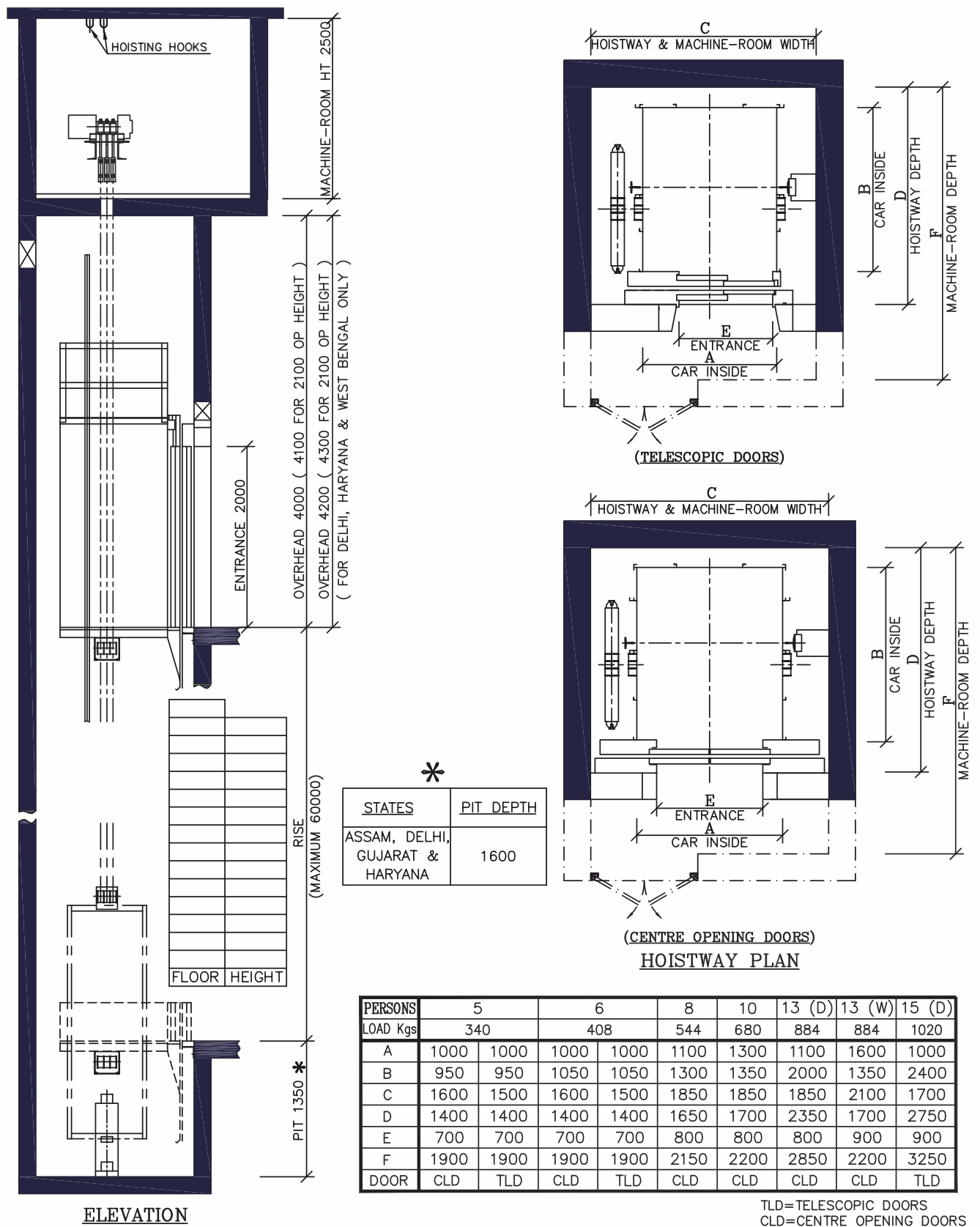
9(612) DUTY IS AVAILABLE WITH A MAXIMUM OF 11 STOPS AND 30 METERS RISE.

TLD=TELESCOPIC DOORS
CLD=CENTRE OPENING DOORS

REFER TO OTIS DETAILED DR WING FOR ADDITIONAL INFORMATION
DETAILS OF PRODUCTS DESIGN ARE SUBJECT TO CHANGE.

ALL DIMENSIONS ARE IN mm.

PM GEARLESS: (WITH MACHINE ROOM) SPEED: 1.00mps



REFER TO OTIS DETAILED DRAWING FOR ADDITIONAL INFORMATION
DETAILS OF PRODUCTS DESIGN ARE SUBJECT TO CHANGE.

ALL DIMENSIONS ARE IN mm.

Otis gives people freedom to connect and thrive in a taller, faster, smarter world. The global leader in the manufacture, installation and servicing of elevators and escalators, we move 2 billion people a day and maintain more than 2.1 million customer units worldwide – the industry's largest Service portfolio. You'll find us in the world's most iconic structures, as well as residential and commercial buildings, transportation hubs and everywhere people are on the move. Headquartered in Connecticut, USA, Otis is 70,000 people strong, including 41,000 field professionals, all committed to meeting the diverse needs of our customers and passengers in more than 200 countries and territories. To learn more, visit www.otis.com and follow us on LinkedIn, Instagram, Facebook and Twitter @OtisElevatorCo.